

CONICAL TANKER SEMI TRAILER

Charismatic and Attractive





curious for better.

What curiosity means to us, A better future.

The unique reason that the human "bring into being" is curiosity. Curiosity is the first "set a foot on the moon". Because curiosity; to realize a better and more beautiful future, ask questions, try to understand, produce innovative solutions, explore and never give up. It always takes us a step further.

Our job is always to move your business "one step forward". That's why we're curious. We recognize the needs of the trailer and superstructure equipment sector "before needs appearance" and produce innovative, user friendly and efficiency based products. We dominate the technologies that can go beyond your expectations. Due to our curiosity, we have changed the habits of the sector with every new project we made. We have broken grounds; but we have never been curious about being ahead only with the numbers.

The quality documents we have obtained being a catalyser that enable us to produce new technologies, make progress and be more curious. We curious not just about our sector, we curious about the whole world. For the nonce we are in 3 continents. We are constantly building strong values and collaborations for all of our stakeholders by producing special solutions for the needs of new geographies day by day.

Curiosity means to us not only innovation, engineering and technology. It means to us more beautiful and profitable day for the future.







■ CONICAL TANKER SEMI TRAILER

Charismatic and Attractive


While interiorising innovative and creative solutions tailored to the specific needs of our customers as the basic principle of flexible production concept with our own know-how licenses and created technologies, Conical Tanker Semi Trailer that can be filled up from the top and bottom, carry the dangerous goods in accordance with ADR Class 3 appropriate to LGBF tank code and its hierarchy in the single or till seven compartments, discharged by gravity or pump-driven, can be made of carbon, stainless steel and aluminium alloyed materials, with the thicknesses conforms to design calculation, in conical-cylindrical cross section and large volume range according to ADR-EN 13094 regulations, the climate and road conditions of the geographical region it serves; its **“Charismatic and Attractive”** unique body structure challenges both the roads and years with its technologies and stand while being produced by the longest welding seam technology with minimum number of (T) joints and one-piece plates in the main body structure.




28.000 ~ 55.000 Lt.
Volume Range




1 ~ 7
Number of
Compartments



-20 ~ +50 °C
Design Temperature



0,5 Bar
Design Pressure



LGBF
Tank Code



Solid Background

Make feel its users being first class, with its unchanging line from past to present, strong stand, trustworthy certification processes and gained profit.





Modular Options

Options of special designed alternative volume, number of compartments, discharge systems and equipment; sort out your job.



OUTSTANDING FEATURES



Two sides and automatic opening handrail

Provides ease of use, safety and automatically locks the brake system



Built-in type manhole covers

Protect armatures against possible rollover and impact



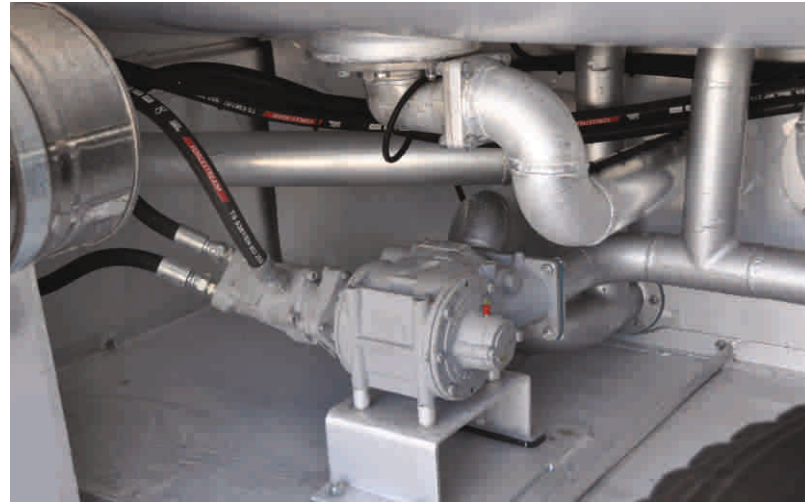
Bottom discharges opened by deep drawing method

Provides full discharge of the product at the bottom of the tank



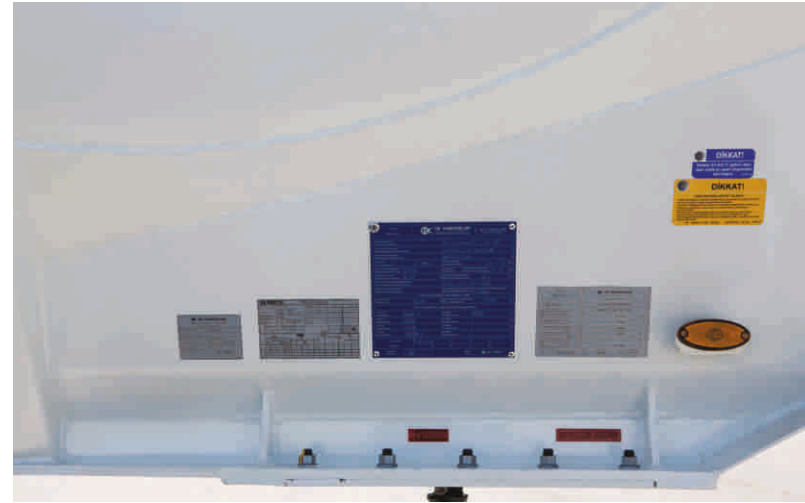
Armature discharge box's cover (Bus type)

Provides mobility and ergonomic handling even in the narrow area



Optional Pump-Driven Discharge System

Ergonomic handling with optimized hydromotor, piping and technical equipment provides fast and high flow rate discharge



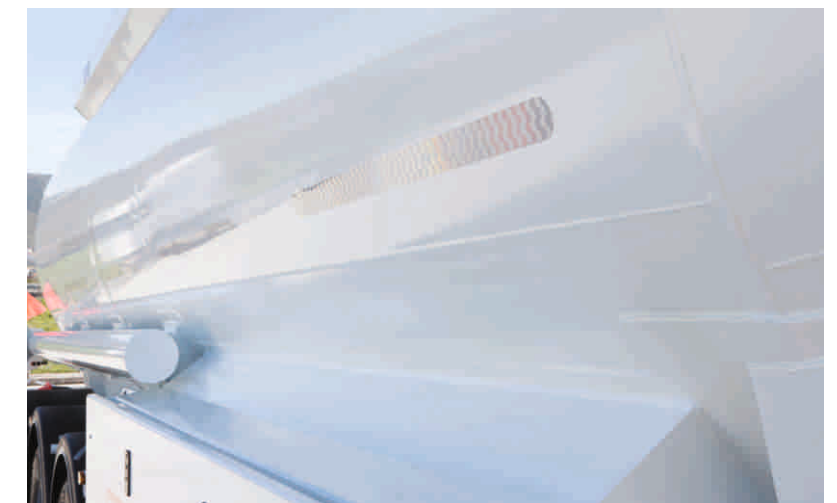
ADR Certificated Type Approved Body by TSE / Turkey

Provides full and secure supervision by national and international up-to-date legislative compliance and expert team



OMEGA mounting slots and bolted connection system on the chassis

Perfect fit between body and chassis under all kinds of road conditions, increase strength, reduce tension by distributing coming force to the body



Jointless and one-piece plates in the body structure

The least number of (T) joints provide high strength and long life



The longest welding seam technology in weld joints

Safe, smooth surface and unique body structure



Use of robotic welding technology in OMEGA® monoblock connection saddles

Increases body strength at chassis joints, reduces tension effect, provides unity of body



Seamless high performance robotic welding technology

Minimizes welding faults on the body due to tension and human factors and secures against impact



Homogeneous paint application with advanced technical equipment

Provides surface gloss in varnish quality



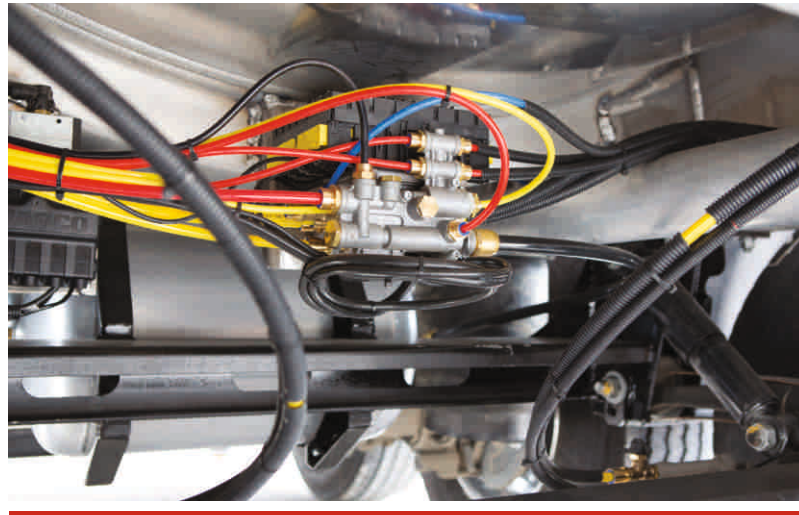
Sloping chassis design

Provides complete discharge without any liquid remaining in the tank body



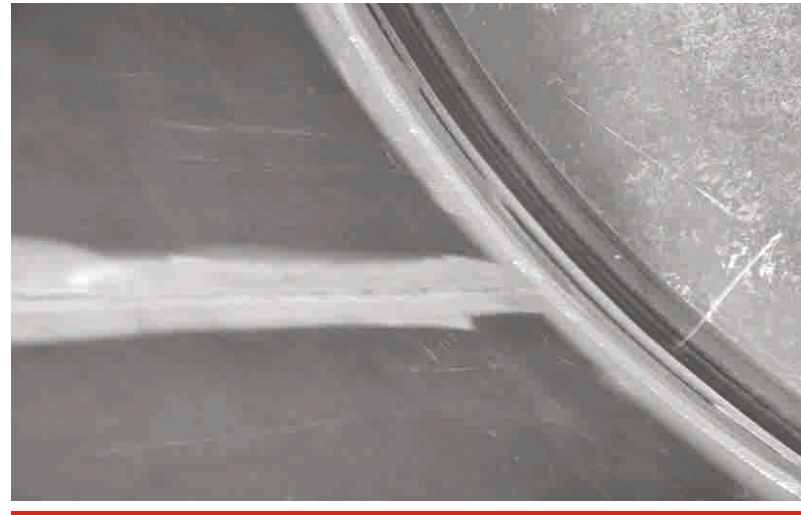
Germany KBA approved 2007/46/EC Vehicle Type Approval

Covers national and International up-to-date regulatory compliance and 98/91/EC chassis ADR type approval regulation



Coloured, POLYAMID air hoses

Prevents complexity on installation cables, provides serviceability





Show of Strength

Its style of unique body design, original stand and visual aesthetic against compeers makes it more attractive.



TECHNICAL SPECIFICATIONS

1. Dimensions		Certification	: ADR - Turkey TSE / Germany KBA (Tuv)
Width	: max. 2.550 mm		* The product type and optional equipment can
Height	: max 3.800 mm *		vary depending on your choice.
Axle Distance	: 1.300 ~ 1.400 mm *	4. Chassis Equipment:	
5 th Wheel Height	: 1.250 ~ 1.350 mm *	King-Pin	: Conforms to ECE R 55 regulation, type approved
Dead Weight	: 5.250 ~ 5.800 kg *		2 “or 3.5” demountable king pin
		Landing Legs	: Each is double speed, 25 ton dynamic, 50 ton
2. Capacity			static load capacity trailer landing legs
Geometrical Volume	: 28.000 ~ 54.000 l. *	Axles	: Axle set with 9 or 10 tonnes each, air
Number Of Compartment	: 1 ~ 7 *		suspension, disc brakes
		Rims	: 14,00 or 11,75 x 22,5
3. Tank		Tires	: 425 or 385 /65 R 22,5
Tank Code	: LGBF	Brake System	: Conforms to ECE R 13 regulation 2S2M EBS /RSP
Tank Class	: Class 3		brake system
Construction Material Serial	: Aluminium Alloy or Mild Steel or	Electric System	: Conforms to ECE R 105 regulation ADR approved
	Stainless Steel *		electric system
Transported Materials	: Gasoline, Diesel, Jet A-1	Bumper	: Conforms to ECE R 58 regulation rear bumper
Operating Temperature	: -20°C +50°C		

TECHNICAL SPECIFICATIONS

5. Tank Body:

- » Conical-Cylindrical cross section design conforms to EN 13094 standard.
- » Dished heads at the front and rear, in accordance with EN 13094 design standard internal baffles fit the selected number of compartments.
- » ISO 3834 Welded manufacturing quality qualification approved.
- » Unique body structure in the tanker manufacturing sector with a smooth surface, with a minimum number of (T) joints, produced by the longest welding seam technology in the conical and main body structure, seamless, integral plates and their welded joints.
- » Using seamless high-performance robotic welding technology, welding faults on the body due to tension and human factors are minimized and secured against impact.
- » Tanks and connections are tested with the method of analysis of the end elements under maximum allowable load to increase the strength of the body and reduce the tension effect at the frame junctions. The robotic welding technology is applied to the OMEGA monoblock connection saddles.
- » The slope in the chassis design allows complete discharge of each compartment of the tank, with no liquid remaining.
- » Air gap safety against expansion and overflow conforms to EN 15120 standard.

6. Loading / Discharge Line:

Loading Line

- » Depending on the driving direction, it is filled through the right-handed couplings from the bottom or the filler opening on the manhole covers from the top.

Discharge Line

- » Meets EN 13094, on the right side according to the driving direction, gravity discharge through the discharge piping line extending from the bottom valves up to the couplings, at such a slope in order not to remain any liquid in the line after discharge.
- » ISO 3834 Welded production quality qualification approved discharge pipes welded to the patent padded.

7. Chassis:

- » Special designed suitable to body design, horizontally and vertically angled, rollover safety monoblock chassis.
- » OMEGA® monoblock connection saddles provide a rigid structure with excellent fit to the chassis mounting slots and increase strength.
- » Tension reduction gaps reduce the tension by distributing the force coming from the road conditions to the running group.
- » Chassis construction parts are manufactured with synergy welding machines by certified welders under the approval of ISO 3834 Welding quality qualification with perfect harmony.

8. Paint:

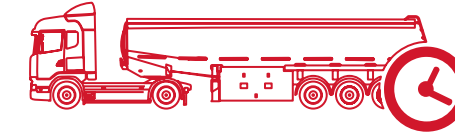
- » At least 2 coats of epoxy primer.
- » “OVEN-DRYING” application on topcoat with 2 coats of acrylic paint.
- » Improved technical equipment ensures homogeneous distribution on each side of the body and surface gloss of varnish paint gloss.



Safe Lightness

We do not underestimate the weight!
Carry out the dynamic loads at high volume under the heavy duty conditions with safe weight optimization and without compromising of the ergonomic driving.

GALLERY



Performance needs source

Durable body structure together with superior production technology and premium equipment turns the long lifetime into profit.





ATAOSB Mah. ASTİM 3. Cad. No: 7, 09010 Efeler, Aydın / TÜRKİYE
T : +90 850 850 1 658 • F : +90 256 231 0 516 • info@okt-trailer.com • www.okt-trailer.com

f /okt.trailer @ /okt.trailer in /company/okt-trailer You Tube /okttrailer

