

TRUCKMOUNTED CYLINDRICAL TANKER

Perfect Harmony



 **curious for better.**

 **OKT TRAILER**

curious for better.



What curiosity means to us, A better future.

The unique reason that the human “bring into being” is curiosity. Curiosity is the first “set a foot on the moon”. Because curiosity; to realize a better and more beautiful future, ask questions, try to understand, produce innovative solutions, explore and never give up. It always takes us a step further.

Our job is always to move your business “one step forward”. That’s why we’re curious. We recognize the needs of the trailer and superstructure equipment sector “before needs appearance” and produce innovative, user friendly and efficiency based products. We dominate the technologies that can go beyond your expectations. Due to our curiosity, we have changed the habits of the sector with every new project we made. We have broken grounds; but we have never been curious about being ahead only with the numbers.

The quality documents we have obtained being a catalyser that enable us to produce new technologies, make progress and be more curious. We curious not just about our sector, we curious about the whole world. For the nonce we are in 3 continents. We are constantly building strong values and collaborations for all of our stakeholders by producing special solutions for the needs of new geographies day by day.

Curiosity means to us not only innovation, engineering and technology. It means to us more beautiful and profitable day for the future.





■ CYLINDRICAL TANKER TRUCKMOUNTED

Perfect Harmony

While adopting innovative and creative solutions tailored to the specific needs of our customers as the basic principle of flexible production understanding, with our own know-how licenses and technologies, according to ADR-EN 13094 legislation, geographical region to be served by the climate and road conditions, carbon steel and alloyed aluminium materials, in accordance with design calculations, cylindrical section, large volume range, filling up from the top and bottom, appropriate to the LGBF tank code and hierarchy, can carry up from one to five partition of the dangerous substances in ADR Class-3, Truck-mounted Cylindrical Tanker capable of evacuation to the flow and discharged; **“Perfect Fit”** with the truck manufacturer's superstructure instructions and truck chassis in different configurations.



2.500 ~ 27.500 Lt.
Volume Range



1 ~ 5
Number of
Compartments



-20 ~ +50 °C
Design Temperature



0,5 Bar
Design Pressure



LGBF
Tank Code



Strong Image

Add a solid image to its users with its experience from past to present, trustworthy certification processes and gained profit.



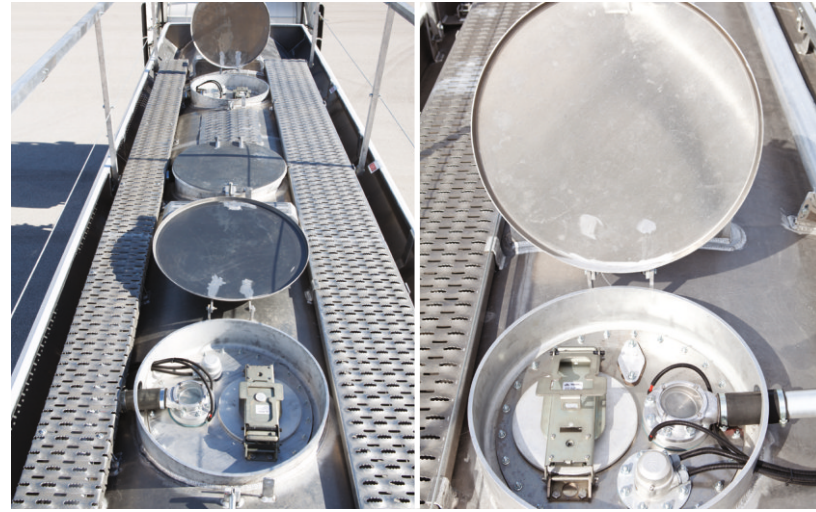


OUTSTANDING FEATURES



Two sides and automatic opening handrail

Provides ease of use, safety and automatically locks the brake system

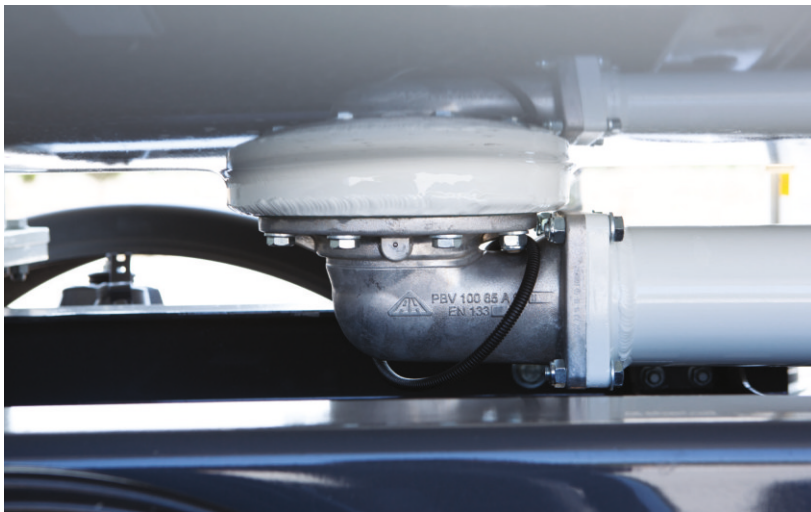


Spilltrays type top pool

The equipment on the manhole cover is protected against seasonal weather conditions (rain, snow, sun, dust)

Built-in type manhole covers

Protect armatures against possible rollover and impact



Bottom discharges opened by deep drawing method

Provides full discharge of the product at the bottom of the tank



Armature discharge box's cover (Bus type)

Provides mobility and ergonomic handling even in the narrow area



ADR Certificated Type Approved Body by TSE / Turkey

Provides full and secure supervision by national and international up-to-date legislative compliance and expert



The longest welding seam technology in weld joints

Safe, smooth surface and unique body structure



Jointless and one-piece plates in the body structure

The least number of (T) joints provide high strength and long life



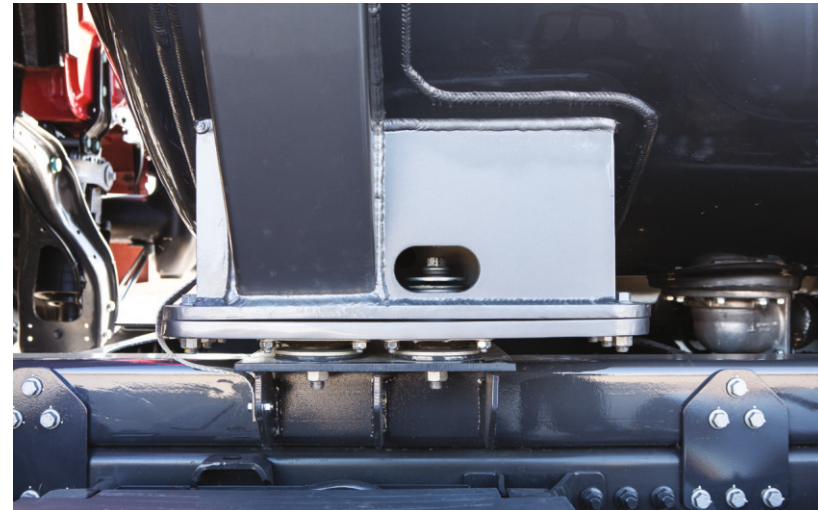
Seamless high performance robotic welding technology

Minimizes welding faults on the body due to tension and human factors and secures against impact



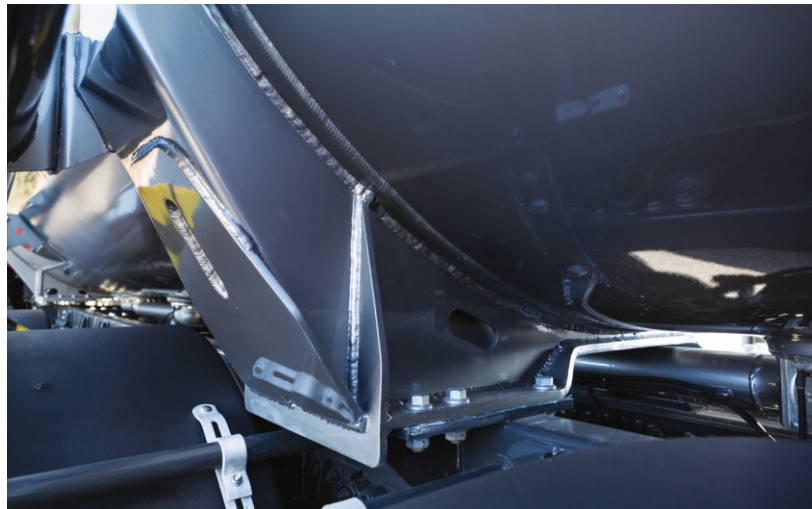
Homogeneous paint application with advanced technical equipment

Safe, smooth surface and unique body structure



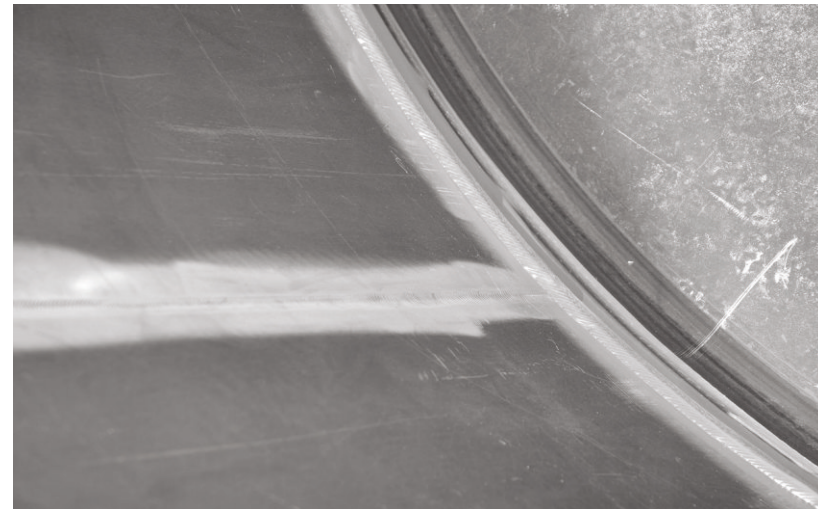
OMEGA mounting slots and bolted connection system on the chassis

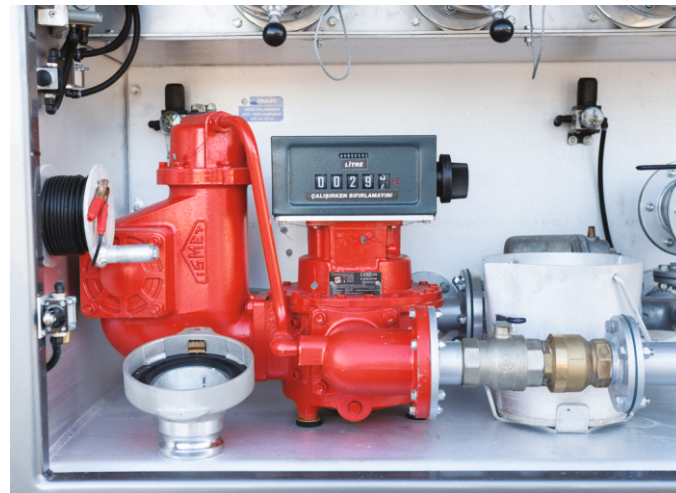
Perfect fit between body and chassis under all kinds of road conditions, increase strength, reduce tension by distributing coming force to the body



Use of robotic welding technology in OMEGA® monoblock connection saddles

Increases body strength at chassis joints, reduces tension effect, provides unity of body









Difference Is Its Style

It creates a difference in style according to its own position and visual aesthetic.



TECHNICAL SPECIFICATIONS

1. Dimensions

Width	: max 2.550 mm
Height	: max 3.500 mm *
Dead Weight	: 1.700 ~ 3.500 kg *

2. Capacity

Geometrical Volume	: 6.000 ~ 26.000 l *
Number Of Compartment	: 1 ~ 5 *

3. Tank

Tank Code	: LGBF
Tank Class	: Class 3
Construction Material Serial	: Aluminum Alloy or Carbon steel*
Transported Materials	: Gasoline, Diesel, Jet A-1
Operating Temperature	: -20°C +50°C
Certification	: ADR - Turkey TSE / Germany KBA (Tuv)

* The product type and optional equipment

can vary depending on your choice.

4. Chassis Equipment

Mudguard	: Semi-circle rigid plastic fender mounted on each wheel with aluminium clamp
Mudflaps	: Conform 109/2011/EU directive type approved anti-spray mudflaps
Lateral Protection	: Conforms ECE R73 regulation protection equipment (lateral protection etc.)

TECHNICAL SPECIFICATIONS

5. Tank Body

- » Cylindrical cross section design conforms to EN 13094 standard.
- » Dished heads at the front and rear, in accordance with EN 13094 design standard internal baffles fit the selected number of compartments.
- » ISO 3834 Welded manufacturing quality qualification approved.
- » Unique body structure in the tanker manufacturing sector with a smooth surface, with a minimum number of (T) joints, produced by the longest welding seam technology in the cylindrical structure, seamless, integral plates and their welded joints
- » Using seamless high-performance robotic welding technology, welding faults on the body due to tension and human factors are minimized and secured against impact.
- » Tanks and connections are tested with the method of analysis of the end elements under maximum allowable load to increase the strength of the body and reduce the tension effect at the frame junctions. The robotic welding technology is applied to the OMEGA monoblock connection saddles.
- » The slope in the chassis design allows complete discharge of each compartment of the tank, with no liquid remaining.
- » Air gap safety against expansion and overflow conforms to EN 15120 standard.

6. Loading/Discharge Line

Loading Line

- » Depending on the driving direction, it is filled through the right-handed couplings from the bottom or the filler opening on the manhole covers from the top.

Discharge Line

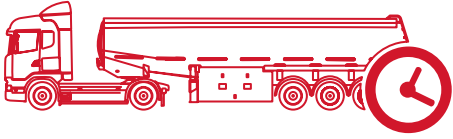
- » Meets EN 13094, on the right side according to the driving direction, gravity discharge through the discharge piping line extending from the bottom valves up to the couplings, at such a slope in order not to remain any liquid in the line after discharge.
- » ISO 3834 Welded production quality qualification approved discharge pipes welded to the patent padded.

7. Subframe

- » Suitable for body design, rollover safety special design subframe made of steel material that can be adapted to bolt connection according to the manufacturer's superstructure installation instructions for all types of truck chassis.
- » OMEGA® monoblock connection saddles provide a rigid structure with excellent fit to the chassis mounting slots and increase strength.
- » The spring connections used in the front subframe connections of the tank reduce the tension by distributing the force coming to the body from the road conditions..
- » Chassis construction parts are manufactured in perfect harmony with synergic welding machines by certified welders under the approval of ISO 3834 Welded manufacturing quality qualification.

8. Paint

- » At least 2 coats of epoxy primer.
- » "OVEN-DRYING" application on topcoat with 2 coats of acrylic paint.
- » Improved technical equipment ensures homogeneous distribution on each side of the body and surface gloss of varnish paint gloss.



Performance Needs Source

Durable body structure together with superior production technology and premium equipment turns the long lifetime into profit.



GALLERY





Modular Volume

Offer modular solutions for the trucks' frame in different configurations with its alternative designs in wide range volume.





What curiosity means to us, A better future.



ME.1118.1502.101.18.00

OKT TRAILER reserves the right to make changes in the products. Technical information is approximate and is intended for standard product application. The measurements may vary depending on the truck brand and model. The subject information is not quoted, if you contact us, you can get more detailed information about the product.

 **curious for better.**

ATAOSB Mah. ASTİM 3. Cad. No: 7, 09010 Efeler, Aydın / TÜRKİYE
T : +90 850 850 1 658 • F : +90 256 231 0 516 • info@okt-trailer.com • www.okt-trailer.com

 /okt.trailer  /okt.trailer  /company/okt-trailer  /okttrailer


OKT Trailer