

TRUCKMOUNTED ELLIPTICAL TANKER

Holistic Aesthetic





curious for better.

What curiosity means to us, A better future.

The unique reason that the human “bring into being” is curiosity. Curiosity is the first “set a foot on the moon”. Because curiosity; to realize a better and more beautiful future, ask questions, try to understand, produce innovative solutions, explore and never give up. It always takes us a step further.

Our job is always to move your business “one step forward”. That’s why we’re curious. We recognize the needs of the trailer and superstructure equipment sector “before needs appearance” and produce innovative, user friendly and efficiency based products. We dominate the technologies that can go beyond your expectations. Due to our curiosity, we have changed the habits of the sector with every new project we made. We have broken grounds; but we have never been curious about being ahead only with the numbers.

The quality documents we have obtained being a catalyser that enable us to produce new technologies, make progress and be more curious. We curious not just about our sector, we curious about the whole world. For the nonce we are in 3 continents. We are constantly building strong values and collaborations for all of our stakeholders by producing special solutions for the needs of new geographies day by day.

Curiosity means to us not only innovation, engineering and technology. It means to us more beautiful and profitable day for the future.



■ TRUCKMOUNTED ELLIPTICAL TANKER

Holistic Aesthetic

While interiorising innovative and creative solutions tailored to the specific needs of our customers as the basic principle of flexible production concept with our own know-how licenses and created technologies, Truckmounted Elliptical Tanker that can be filled up from the top and bottom, carry the dangerous goods in accordance with ADR Class 3 appropriate to LGBF tank code and its hierarchy in the single or till five compartments, discharged by gravity or pump-driven, can be made of carbon steel and aluminium alloyed materials, with the thicknesses conforms to design calculation, in elliptical cross section and large volume range according to ADR-EN 13094 regulations, the climate and road conditions of the geographical region it serves; provides visually “Holistic Aesthetic” with its design suitable to the truck manufacturer’s body builder instructions and trucks’ frame in different configurations.



8.000 ~ 29.000 Lt.
Volume Range



1 ~ 5
Number of
Compartements



-20 ~ +50 °C
Design Temperature



0,5 Bar
Design Pressure



LGBF
Tank Code



A Strong Image

Add a solid image to its users with its experience from past to present, trustworthy certification processes and gained profit.





OUTSTANDING FEATURES



Two sides and automatic opening handrail
Provides ease of use, safety and automatically locks the brake system.



Built-in type manhole covers
Protect armatures against possible rollover and impact.

Protective cover
The equipment on the manhole cover is protected against seasonal weather conditions (rain, snow, sun, dust)



Outputs opened by deep drawing method
At the bottom of the tank, it provides full discharge of the product.



Armature discharge box's cover (Bus type)
Provides mobility and ergonomic handling even in the narrow area.



ADR Certificated Type Approved Body by TSE / Turkey

Provides full and secure supervision by national and international up-to-date legislative compliance and expert team.



The longest welding seam technology in weld joints

Safe, smooth surface and unique body structure.



Homogeneous paint application with advanced technical equipment

Provides surface gloss in varnish quality.



OMEGA mounting slots and tension relief cavities on the chassis

Perfect fit between body and chassis under all kinds of road conditions, increase strength, reduce tension by distributing coming to the body force.



Jointless and one-piece plates in the body structure

The least number of (T) joints provide high strength and long life.



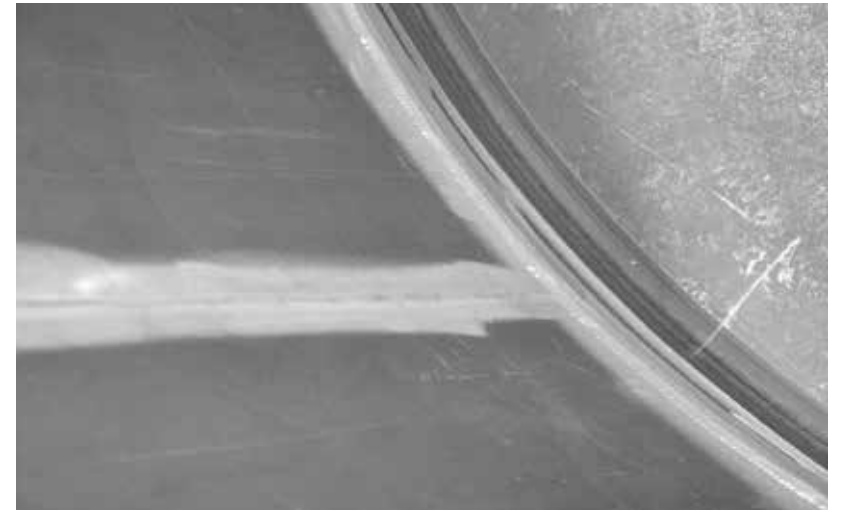
Seamless high performance robotic welding technology

Minimizes welding faults on the body due to tension and human factors, prevents product mix between compartments and secures against impact.



Use of robotic welding technology in OMEGA® monoblock connection saddles

Increases body strength at chassis joints, reduces tension effect, provides unity of body.

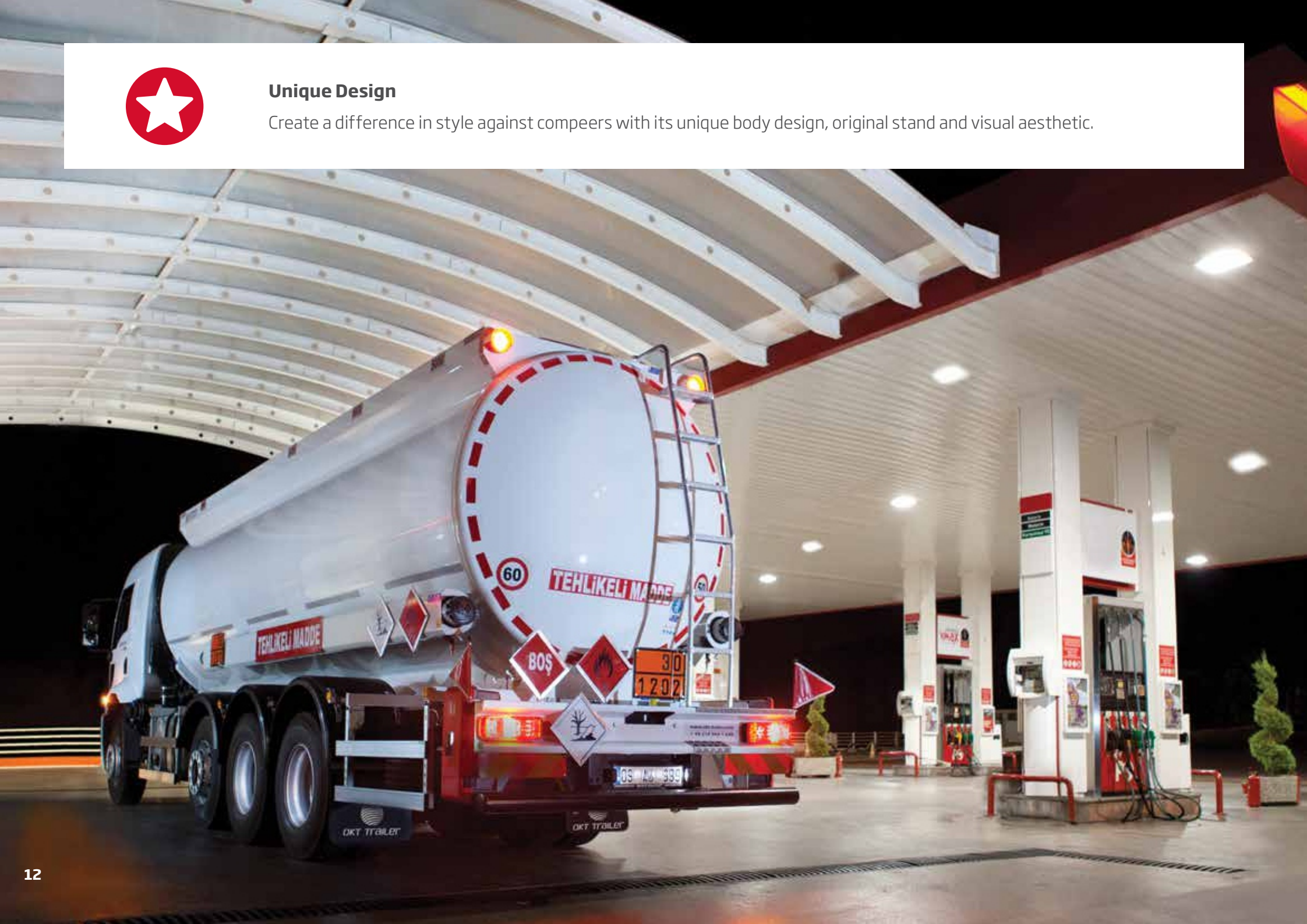






Unique Design

Create a difference in style against compeers with its unique body design, original stand and visual aesthetic.



TECHNICAL SPECIFICATIONS

1. Dimensions		4. Chassis Equipment:	
Width	: max 2.550 mm	Mudguard	: Semi-circle rigid plastic fender mounted on
Height	: max 3.200 mm *		each wheel with aluminium clamp
Dead Weight	: 1.700 ~ 3.600 mm *	Mudflaps	: Conform 109/2011/EU directive type approved
			anti-spray mudflaps
2. Capacity		Lateral Protection	: Conforms ECE R73 regulation protection
Geometrical Volume	: 6.000 ~ 27.500 l *		equipment (Lateral protection etc.)
Number Of Compartment	: 1 ~ 5 *		
3. Tank			
Tank Code	: LGBF		
Tank Class	: Class 3		
Construction Material Serial	: Aluminum Alloy or Carbon steel*		
Transported Materials	: Gasoline, Diesel, Jet A-1		
Operating Temperature	: -20°C +50°C		
Certification	: ADR - Turkey TSE / Germany KBA (Tuv)		

* The product type and optional equipment can vary depending on your choice.

TECHNICAL SPECIFICATIONS

5. Tank Body:

- » Elliptical cross section design conforms to EN 13094 standard.
- » Dished heads at the front and rear, in accordance with EN 13094 design standard internal baffles fit the selected number of compartments.
- » ISO 3834 Welded manufacturing quality qualification approved.
- » Unique body structure in the tanker manufacturing sector with a smooth surface, with a minimum number of (T) joints, produced by the longest welding seam technology in the elliptical structure, seamless, integral plates and their welded joints.
- » Using seamless high-performance robotic welding technology, welding faults on the body due to tension and human factors are minimized and secured against impact.
- » Tanks and connections are tested with the method of analysis of the end elements under maximum allowable load to increase the strength of the body and reduce the tension effect at the frame junctions.
- » The robotic welding technology is applied to the OMEGA monoblock connection saddles.
- » The slope in the chassis design allows complete discharge of each compartment of the tank, with no liquid remaining.
- » Air gap safety against expansion and overflow conforms to EN 15120 standard.

6. Loading/Discharge Line:

Loading Line

- » Depending on the driving direction, it is filled through the right-handed couplings from the bottom or the filler opening on the manhole covers from the top.

Discharge Line

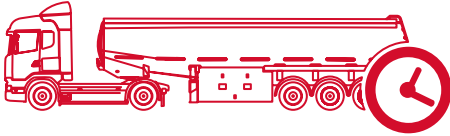
- » Meets EN 13094, on the right side according to the driving direction, gravity discharge through the discharge piping line extending from the bottom valves up to the couplings, at such a slope in order not to remain any liquid in the line after discharge.
- » ISO 3834 Welded production quality qualification approved discharge pipes welded to the patent padded.

7.Subframe:

- » Suitable for body design, rollover safety special design subframe made of steel material that can be adapted to bolt connection according to the manufacturer's superstructure installation instructions for all types of truck chassis.
- » OMEGA® monoblock connection saddles provide a rigid structure with excellent fit to the chassis mounting slots and increase strength.
- » The spring connections used in the front subframe connections of the tank reduce the tension by distributing the force coming to the body from the road conditions.
- » Chassis construction parts are manufactured in perfect harmony with synergic welding machines by certified welders under the approval of ISO 3834 Welded manufacturing quality qualification.

8.Paint:

- » At least 2 coats of epoxy primer.
- » "OVEN-DRYING" application on topcoat with 2 coats of acrylic paint.
- » Improved technical equipment ensures homogeneous distribution on each side of the body and surface gloss of varnish paint gloss.

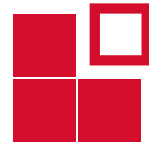


Performance needs Source

Durable body structure together with superior production technology and premium equipment turns the long lifetime into profit.



GALLERY



Modular Volume

Offer modular solutions for the trucks' frame in different configurations with its alternative designs in wide range volume.





***What curiosity means to us,
A better future.***



ME1118.150210218.00

OKT TRAILER reserves the right to make changes in the products. Technical information is approximate and is intended for standard product application. The measurements may vary depending on the truck brand and model. The subject information is not quoted. If you contact us, you can get more detailed information about the product.



ATAOSB Mah. ASTİM 3. Cad. No: 7, 09010 Efeler, Aydın / TÜRKİYE
T : +90 850 850 1 658 • F : +90 256 231 0 516 • info@okt-trailer.com • www.okt-trailer.com

f /okt.trailer @ /okt.trailer in /company/okt-trailer You /okttrailer

