

FOODSTUFF TANKER SEMI TRAILER

Health Transporter



 **curious for better.**

 **OKT Trailer**



curious for better.

What curiosity means to us, A better future.

The unique reason that the human "bring into being" is curiosity. Curiosity is the first "set a foot on the moon". Because curiosity; to realize a better and more beautiful future, ask questions, try to understand, produce innovative solutions, explore and never give up. It always takes us a step further.

Our job is always to move your business "one step forward". That's why we're curious. We recognize the needs of the trailer and superstructure equipment sector "before needs appearance" and produce innovative, user friendly and efficiency based products. We dominate the technologies that can go beyond your expectations. Due to our curiosity, we have changed the habits of the sector with every new project we made. We have broken grounds; but we have never been curious about being ahead only with the numbers.

The quality documents we have obtained being a catalyser that enable us to produce new technologies, make progress and be more curious. We curious not just about our sector, we curious about the whole world. For the nonce we are in 3 continents. We are constantly building strong values and collaborations for all of our stakeholders by producing special solutions for the needs of new geographies day by day.

Curiosity means to us not only innovation, engineering and technology. It means to us more beautiful and profitable day for the future.





■ **FOODSTUFF TANKER
SEMI TRAILER**

Health Transporter

While bringing the ergonomic usage for our customers to foreground, Foodstuff Tanker Semi Trailer that creates visual aesthetic, protects the sense and carrying temperature of the transported foodstuff in the single or till five compartments with insulation application from loading to discharge point, provides protection of the inner surface with the special application conforms to the content, can be filled up from the top and bottom, discharged by gravity or pump-driven, made of stainless steel material with the thicknesses conforms to design calculations, in cylindrical cross section, large volume range and designed according to “International Carriage of Perishable Foodstuff” (ATP) and other regulations with its loading, discharge and cleaning equipment; becomes a **“Health Transporter”** with its maximum care and sense, challenges both the roads and years with its technologies and unique body structure while being produced by the longest welding seam technology with minimum number of (T) joints and one-piece plates in the main body structure.



26.000 ~ 32.000 Lt.
Volume Range



1 ~ 3
Number of
Compartments



-20 ~ +150 °C
Design Temperature



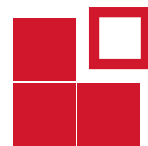
0,5 - 1 Bar
Design Pressure



Excellent for Foodstuff

Add value to the health with its excellent production concept that protects the sense of the product and brings sensitivity to the foreground in the foodstuff transportation.





Modular Options

Options of special designed alternative volume, number of compartments, discharge systems and equipment; sort out your job.



OUTSTANDING FEATURES



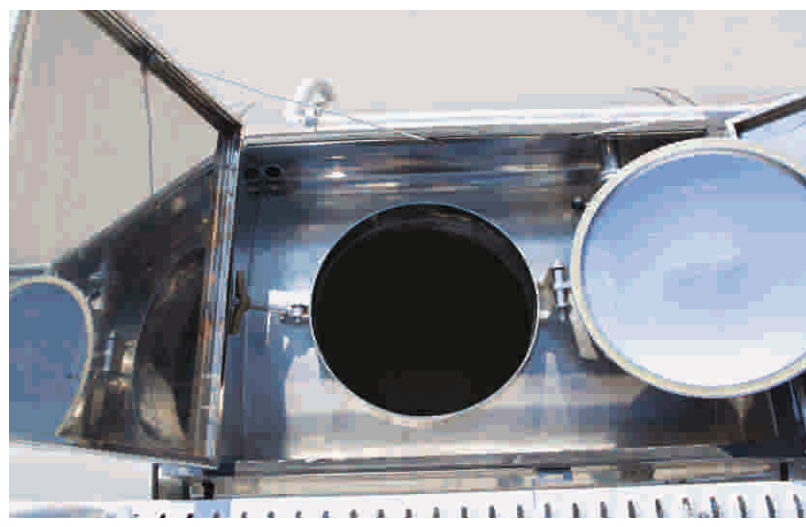
Automatic opening handrail

It provides ease of use, safety and automatically locks the brake system



Protective cover

The equipment on the manhole cover is protected against seasonal weather conditions (rain, snow, sun, dust)



Spilltrays type top pool

Protect armatures against possible rollover and impact



Seamless high performance robotic welding technology

Minimizes welding faults on the body due to tension and human factors are secures against impact



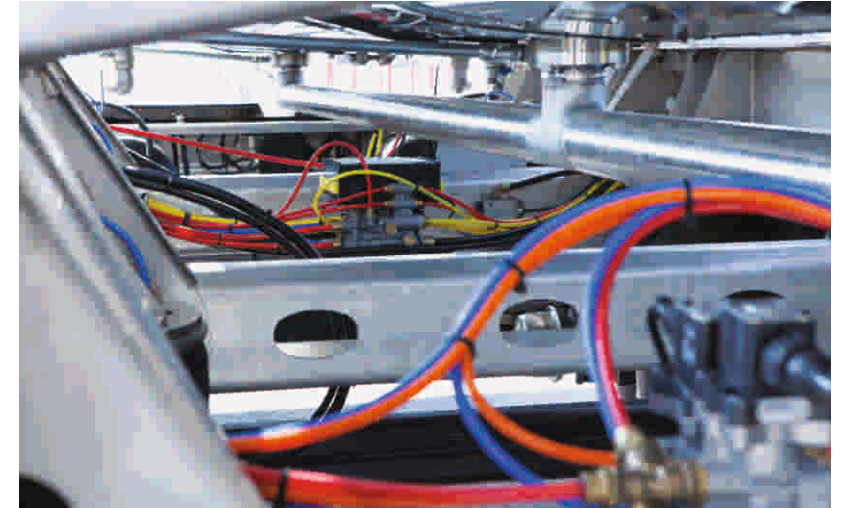
Bottom discharges opened by deep drawing method
Provides full discharge of the product at the bottom of the tank



The longest welding seam technology in weld joints
The least number of (T) joints, high strength, long life, safe, smooth surface and unique body structure



Germany KBA approved 2007/46 / EC Vehicle Type Approval
Covers national and International up-to-date regulatory compliance



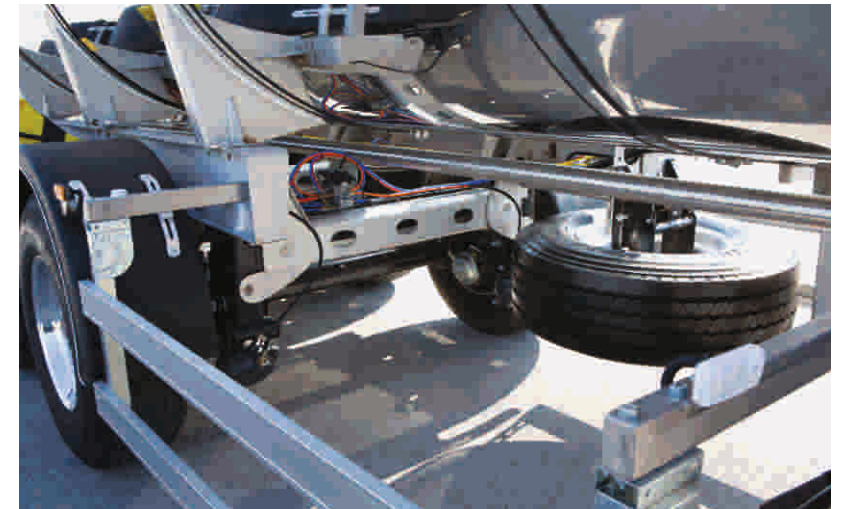
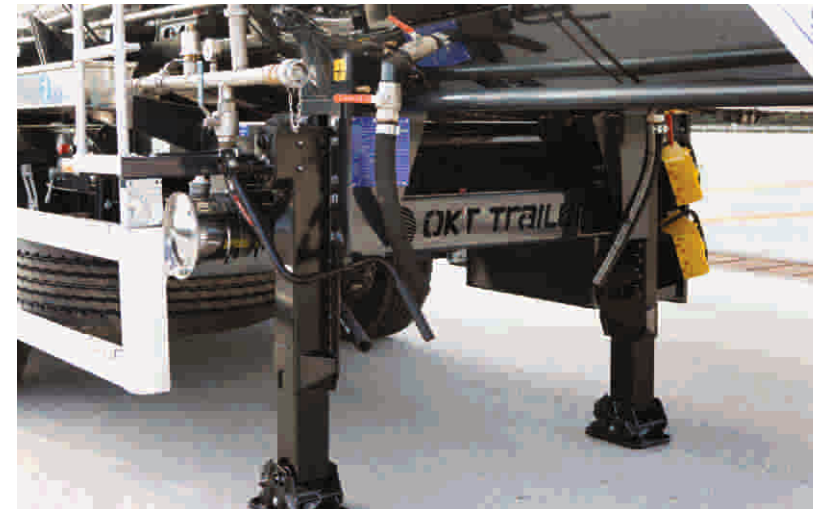
Coloured, POLYAMID air hoses
Prevents complexity on installation cables, provides serviceability

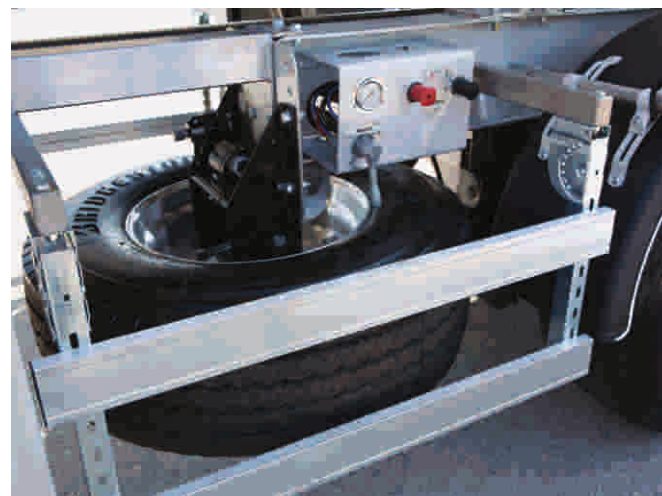


Use of robotic welding technology in OMEGA® monoblock connection saddles
Increases body strength at chassis joints, reduces tension effect, provides unity of body



Sloping chassis design
Provides complete discharge without any liquid remaining in the tank body







Unique Design

Create a difference in style against compeers with its unique body design, original stand and visual aesthetic.



TECHNICAL SPECIFICATIONS

1. Dimensions

Width	: max 2.550 mm
Height	: max 3.800 mm *
Axle Distance	: 1.300 ~ 1.400 mm *
5 th Wheel Height	: 1.250 ~ 1.350 mm *
Dead Weight	: 7.800 ~ 9.750 kg *

2. Capacity

Geometrical Volume	: 26.000 ~ 32.000 l *
Number Of Compartment	: 1 ~ 3 *

3. Tank

Construction Material Serial	: Stainless Steel *
Transported Materials	: Milk, chocolate, wine, molasses, food oils and similar liquid foods *
Operating Temperature	: -20°C +150°C*

* The product type and optional equipment
can vary depending on your choice.

4. Chassis Equipment:

King-Pin	: Conforms to ECE R 55 regulation, type approved 2 “or 3.5” demountable king pin
Landing Legs	: Each is double speed, 25 ton dynamic, 50 ton static load capacity trailer landing legs
Axles	: Axle set with 9 or 10 tonnes each, air suspension, disc brakes
Rims	: 14,00 or 11,75 x 22,5
Tires	: 425 or 385 /65 R 22,5
Brake System	: Conforms to ECE R 13 regulation 2S2M EBS / RSP brake system
Electric System	: Conforms to ECE R 105 regulation ADR approved electric system
Bumper	: Conforms to ECE R 58 regulation rear bumper

TECHNICAL SPECIFICATIONS

5. Tank Body:

- » Cylindrical cross section design conforms to EN 14025 standard.
- » Dished heads at front and rear, in accordance with EN 14025 design standard internal baffles fit the selected number of compartments.
- » ISO 3834 Welded manufacturing quality qualification approved.
- » Unequal body structure in the tanker manufacturing sector with a smooth surface, with a minimum number of (T) joints, produced by the longest welding seam technology in the cylindrical and main body structure, seamless, integral plates and their welded joints.
- » Using seamless high-performance robotic welding technology, welding faults on the body due to tension and human factors are minimized and secured against impact.
- » Tanks and connections are tested with the method of analysis of the end elements under maximum allowable load to increase the strength of the body and reduce the tension effect at the frame junctions. The robotic welding technology is applied to the OMEGA monoblock connection saddles.
- » The slope in the chassis design allows complete discharge of each compartment of the tank, with no liquid remaining.
- » The cleaning manhole for cleaning inside tank and its each compartment when necessary.
- » Air gap safety against expansion and overflow conforms to EN 15120 standard.

6. Insulation:

- » The tank body is covered with rock wool which protects the product temperature and fluidity for a long time and provides full heat insulation.
- » Insulation applied to the body is wrapped around the circumference to prevent sagging, protects against external factors, sealing with lath and heat resistant rubber, visual aesthetically insulated isolation coating and front and rear isolation dished heads.

7. Loading/Discharge Line:

Loading Line

- » Depending on the driving direction, it is filled through the right-handed or rear couplings from the bottom or through the manhole covers or closed-circuit filling couplings from the top.

Discharge Line

- » Meets EN 13094, on the right or rear side according to the driving direction, gravity discharge through the discharge piping line extending from the bottom valves up to the couplings, at such a slope in order not to remain any liquid in the line after discharge.
- » ISO 3834 Welded production quality qualification approved discharge pipes welded to the patent padded.

Equipment

- » Suitable for liquid foodstuff content from stainless materials in accordance with standards.

7. Chassis:

- » Special designed suitable to body design, horizontally and vertically angled, rollover safety monoblock chassis.
- » OMEGA® monoblock connection saddles provide a rigid structure with excellent fit to the chassis mounting slots and increase strength.
- » Tension reduction gaps reduce the tension by distributing the force coming from the road conditions to the running group

8. Paint:

- » After the in-tank pickling application, bacterial formation and chemical corrosion are prevented by passivation process,
- » At least 2 coats of epoxy primer.
- » “OVEN-DRYING” application on topcoat with 2 coats of acrylic paint.
- » Improved technical equipment ensures homogeneous distribution on each side of the body and surface gloss of varnish paint gloss.

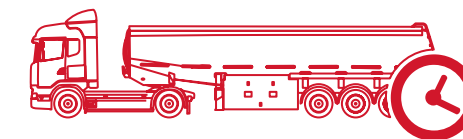


Functionality in Foreground

Bring the functionality into foreground with easy discharge, practical in use and cleaning, optimized equipment designed especially according to the needs and expectations of its users.



GALLERY



Performance Needs Source

Durable body structure together with superior production technology and premium equipment turns the long lifetime into profit.



ATAOSB Mah. ASTİM 3. Cad. No: 7, 09010 Efeler, Aydın / TÜRKİYE
T : +90 850 850 1 658 • F : +90 256 231 0 516 • info@okt-trailer.com • www.okt-trailer.com

 /okt.trailer  /okt.trailer  /company/okt-trailer  /okttrailer

