

TRUCKMOUNTED FOOD TANKER

Natural Equilibrium



 curious for better.

 **OKT Trailer**



curious for better.

What curiosity means to us, A better future.

The unique reason that the human "bring into being" is curiosity. Curiosity is the first "set a foot on the moon". Because curiosity; to realize a better and more beautiful future, ask questions, try to understand, produce innovative solutions, explore and never give up. It always takes us a step further.

Our job is always to move your business "one step forward". That's why we're curious. We recognize the needs of the trailer and superstructure equipment sector "before needs appearance" and produce innovative, user friendly and efficiency based products. We dominate the technologies that can go beyond your expectations. Due to our curiosity, we have changed the habits of the sector with every new project we made. We have broken grounds; but we have never been curious about being ahead only with the numbers.

The quality documents we have obtained being a catalyser that enable us to produce new technologies, make progress and be more curious. We curious not just about our sector, we curious about the whole world. For the nonce we are in 3 continents. We are constantly building strong values and collaborations for all of our stakeholders by producing special solutions for the needs of new geographies day by day.

Curiosity means to us not only innovation, engineering and technology. It means to us more beautiful and profitable day for the future.



■ FOOD TANKER TRUCKMOUNTED

Natural Equilibrium

For our customers, ergonomics of the user is brought to the forefront and aesthetic appearance is gained, protects sensory properties and temperature of transportation by insulating application from the filling up to the discharge, the surface of which is contacted with a special surface treatment suitable for its content, in the suitable thicknesses for the design calculations, cylindrical section allows to carry up to one or three chambers in a wide volume range, powered and makes discharge to the flow, manufactured from the stainless steel body, filling and discharging and cleaning equipment, the Truckmounted Food Tanker designed to comply with the "Perishable Food Regulations" (ATP) and other legislation; provides **"Natural Equilibrium"** with the truck builders' superstructure instructions and truck chassis in different configurations.



10.000 ~ 22.000 Lt.
Volume Range



1 ~3
Number of
Compartments



-20 ~ +150 °C
Design Temperature



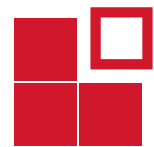
0,5 - 1 Bar
Design Pressure



Excellence In Food

It adds value to the health with its excellent production concept which protects the value of the product in food transportation and brings sensitivity to the foreground.





Modular Volume

Offers modular solutions for the truck chassis in different configurations with its wide volume alternative designs.



OUTSTANDING FEATURES



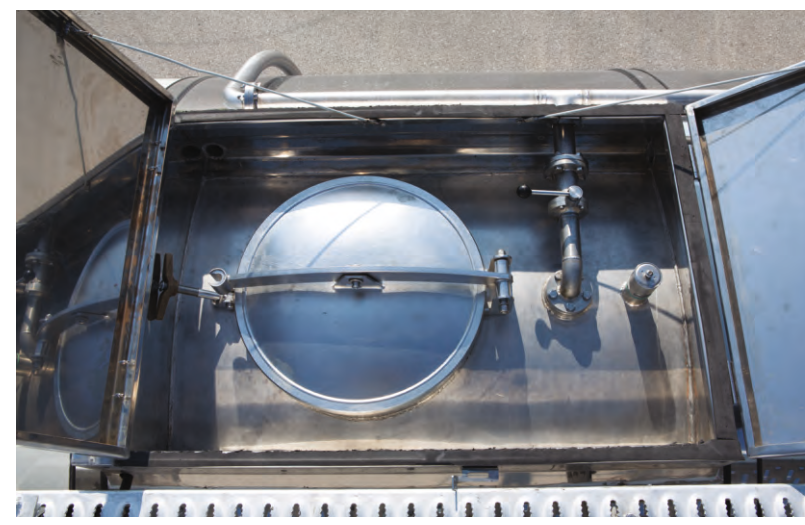
Automatic opening guardrail

It provides ease of use, safety and automatically locks the brake system.



Protective cover

The equipment on the manhole cover is protected against seasonal weather conditions (rain, snow, sun, dust)



Spilltrays type top pool

Protect armatures against possible rollover and impact



Jointless and one-piece plates in the body structure

The least number of (T) joints provide high strength and long life



Bottom discharges opened by deep drawing method
Provides full discharge of the product at the bottom of the tank



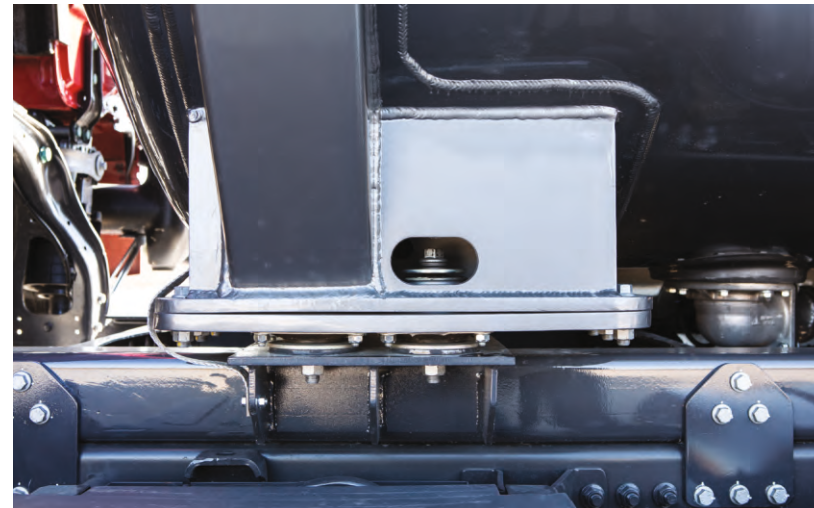
The longest welding seam technology in weld joints
Safe, smooth surface and unique body structure



Use of robotic welding technology in OMEGA® monoblock connection saddles
Increases body strength at chassis joints, reduces tension effect, provides unity of body

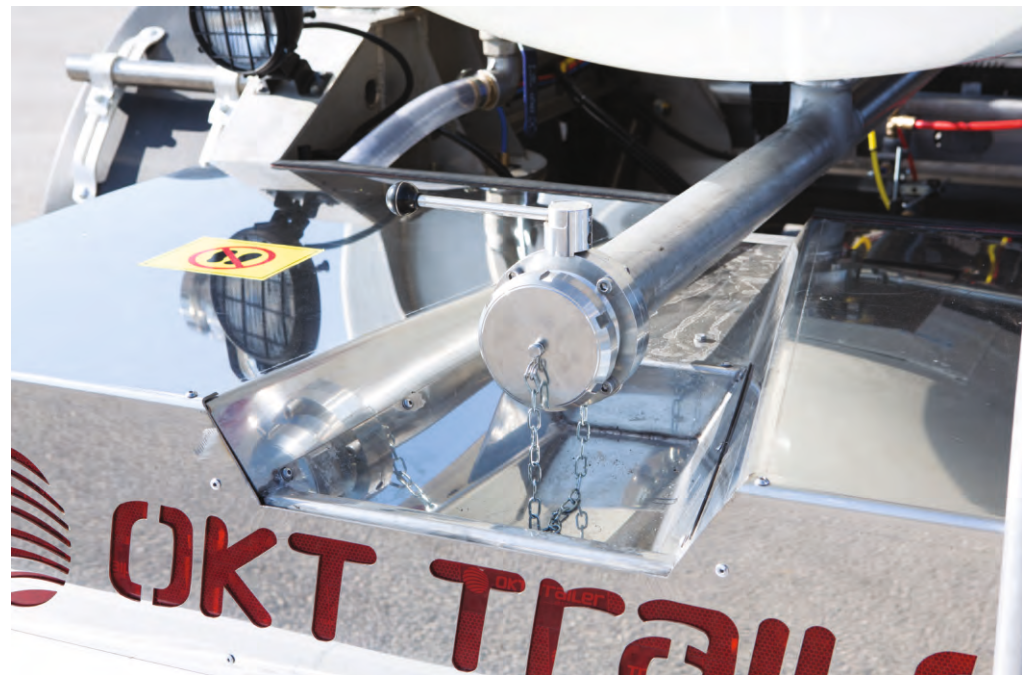


Seamless high performance robotic welding technology
Minimizes welding faults on the body due to tension and human factors are secured against impact



OMEGA mounting slots and bolted connection system on the chassis
Perfect fit between body and chassis under all kinds of road conditions, increase strength, reduce tension by distributing coming force to the body

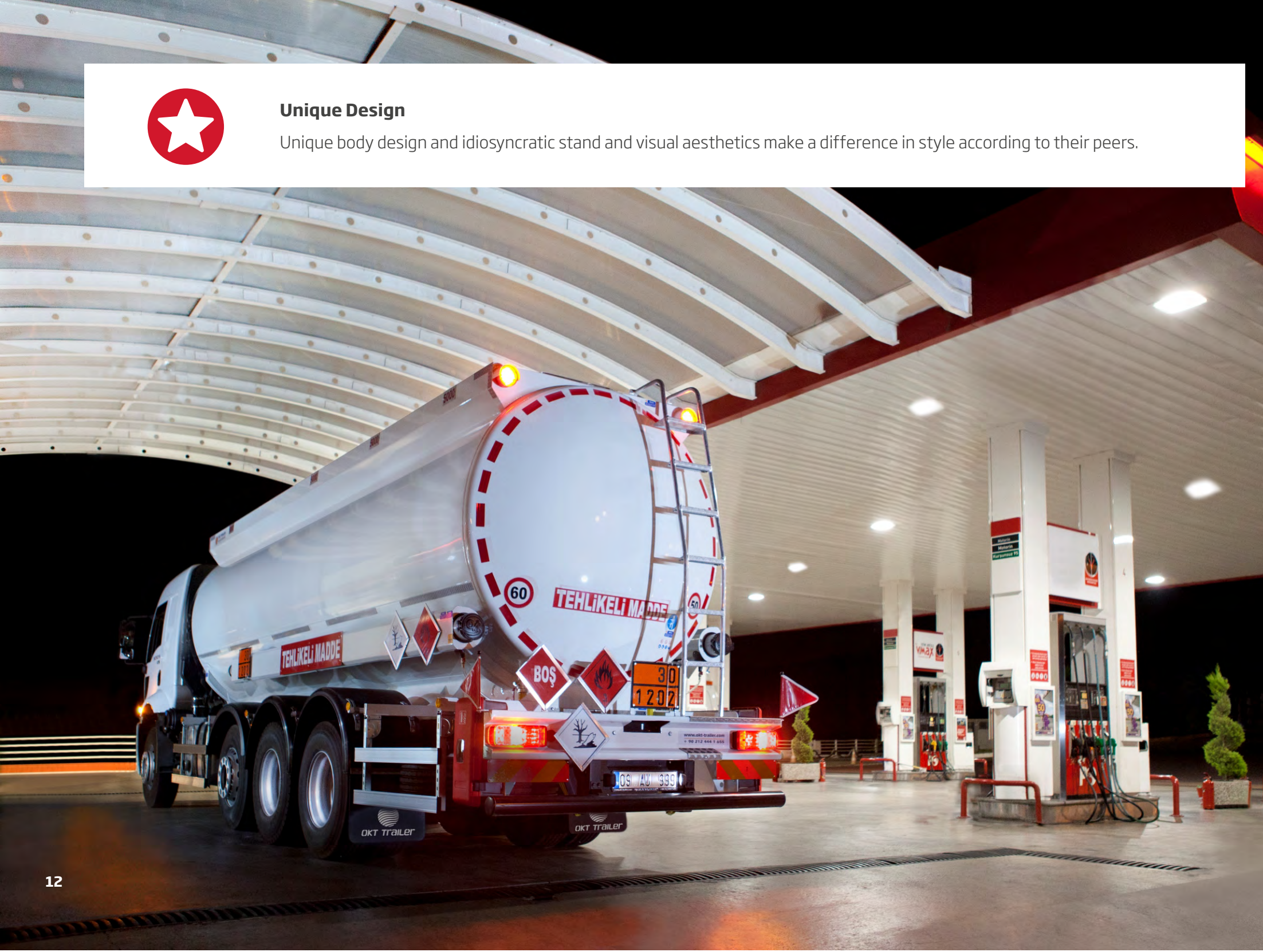






Unique Design

Unique body design and idiosyncratic stand and visual aesthetics make a difference in style according to their peers.



TECHNICAL SPECIFICATIONS

1. Dimensions		4. Chassis Equipment	
Width	: max 2.550 mm	Mudguard	: Semi-circle rigid plastic fender mounted
Height	: max 3.500 mm *		on each wheel with aluminium clamp
Dead Weight	: 2.000 ~ 3.850 kg *	Mudflaps	: Conform 109/2011/EU directive type approved
			anti-spray mudflaps
2. Capacity		Lateral Protection	: Conforms ECE R73 regulation protection
Geometrical Volume	: 10.000 ~ 22.000 l *		equipment (lateral protection etc.)
Number Of Compartment	: 1 ~ 3 *		
3. Tank			
Construction Material Serial : Stainless Steel *			
Transported Materials	: Milk, Drinking Water and similar		
	liquid foods and oils *		
Operating Temperature	: -20 °C +150 °C		
	* The product type and optional equipment		
	can vary depending on your choice.		

TECHNICAL SPECIFICATIONS

5. Tank Body

- » Cylindrical cross section design conforms to EN 14025 standard EN.
- » Dished heads at front and rear, in accordance with EN 13094 design standard internal baffles fit the selected number of compartments.
- » ISO 3834 Welded manufacturing quality qualification approved.
- » Unequal body structure in the tanker manufacturing sector with a smooth surface, with a minimum number of (T) joints, produced by the longest welding seam technology in the cylindrical and main body structure, seamless, integral plates and their welded joints.
- » Using seamless high-performance robotic welding technology, welding faults on the body due to tension and human factors are minimized and secured against impact.
- » Tanks and connections are tested with the method of analysis of the end elements under maximum allowable load to increase the strength of the body and reduce the tension effect at the frame junctions. The robotic welding technology is applied to the OMEGA monoblock connection syllables.
- » The slope in the chassis design allows complete discharge of each compartment of the tank, with no liquid remaining.
- » The cleaning manhole for cleaning inside tank and its each compartment when necessary.

6. Insulation

- » The tank body is covered with rock wool which protects the product temperature and fluidity for a long time and provides full heat insulation.
- » Insulation applied to the body is wrapped around the circumference to prevent sagging, protects against external factors, sealing with lath and heat resistant rubber, visual aesthetically insulated isolation coating and front and rear isolation dished heads.

7. Loading/Discharge Line

Loading Line

- » Depending on the driving direction, it is filled through the right-handed couplings from the bottom or through the manhole covers or closed-circuit filling couplings from the top.

Discharge Line

- » Meets EN 13094, on the right side according to the driving direction, gravity discharge through the discharge piping line extending from the bottom valves up to the couplings, at such a slope in order not to remain any liquid in the line after discharge.
- » ISO 3834 Welded production quality qualification approved discharge pipes welded to the exported patent padded.

Equipment

- » Suitable for liquid foodstuff content from stainless materials in accordance with standards.

8. Subframe

- » Suitable for body design, rollover safety special design subframe made of steel material that can be adapted to bolt connection according to the manufacturer's superstructure installation instructions for all types of truck chassis.
- » OMEGA® monoblock connection saddles provide a rigid structure with excellent fit to the chassis mounting slots and increase strength.
- » The spring connections used in the front subframe connections of the tank reduce the tension by distributing the force coming to the body from the road conditions.
- » Chassis construction parts are manufactured in perfect harmony with synergic welding machines by certified welders under the approval of ISO 3834 Welded manufacturing quality qualification.

9. Paint

- » After the in-tank pickling application, bacterial formation and chemical corrosion are prevented by passivation process.
- » At least 2 coats of epoxy primer.
- » "OVEN-DRYING" application on topcoat with 2 coats of acrylic paint.
- » Improved technical equipment ensures homogeneous distribution on each side of the body and surface gloss of varnish paint gloss.

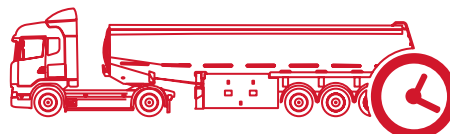


Functionality In The Foreground

Designed specifically for the needs and expectations of users, with the option of heating and discharging system, where the transport temperature is protected, functionality is the foreground.



GALLERY



Performance Needs Source

Durable body structure, superior production technology and premium equipment, turn into the long lifetime to income.



ATAOSB Mah. ASTİM 3. Cad. No: 7, 09010 Efeler, Aydın / TÜRKİYE
T : +90 850 850 1 658 • F : +90 256 231 0 516 • info@okt-trailer.com • www.okt-trailer.com

f /okt.trailer @ /okt.trailer in /company/okt-trailer You Tube /okttrailer

