

# GOOSENECK TANKER SEMI TRAILER

## *Special Cut*



curious for better.



**OMT Trailer**





**curious for better.**

## ***What curiosity means to us, A better future.***

The unique reason that the human "bring into being" is curiosity. Curiosity is the first "set a foot on the moon". Because curiosity; to realize a better and more beautiful future, ask questions, try to understand, produce innovative solutions, explore and never give up. It always takes us a step further.

Our job is always to move your business "one step forward". That's why we're curious. We recognize the needs of the trailer and superstructure equipment sector "before needs appearance" and produce innovative, user friendly and efficiency based products. We dominate the technologies that can go beyond your expectations. Due to our curiosity, we have changed the habits of the sector with every new project we made. We have broken grounds; but we have never been curious about being ahead only with the numbers.

The quality documents we have obtained being a catalyser that enable us to produce new technologies, make progress and be more curious. We curious not just about our sector, we curious about the whole world. For the nonce we are in 3 continents. We are constantly building strong values and collaborations for all of our stakeholders by producing special solutions for the needs of new geographies day by day.

Curiosity means to us not only innovation, engineering and technology. It means to us more beautiful and profitable day for the future.





# ■ GOOSENECK TANKER SEMI TRAILER

## Special Cut

### GOOSENECK TANKER SEMI TRAILER

While adopting innovative and creative solutions tailored to the specific needs of our customers as the basic principle of flexible production understanding, with our own know-how licenses and technologies, according to ADR-EN 13094 legislation, geographical region to be served by the climate and road conditions, carbon steel and alloyed aluminium materials, in accordance with design calculations, Gooseneck Tanker Semi Trailer, large volume range, filling up from the top and bottom, filling up from the top and bottom, appropriate to the LGBF tank code and hierarchy, can carry up to single or seven divisions of the ADR Class-3 hazardous substances, the unique body structure, its **“Special Cut”** makes him unique and being produced by the point of least combination (T) consisting of seamless whole plates in the main body structure and with the longest welding seam technique, challenges both roads and years with its technology.



32.000 ~ 44.500 Lt.  
Volume Range



1 ~ 7  
Number of  
Compartments



-20 ~ +50 °C  
Design Temperature



0,5 Bar  
Design Pressure



LGBF  
Tank Code





### A Solid Stand

The unchanging line from the past to the present day maintains its value for its users with strong stand, trustworthy certification processes.







### Modular Options

Rise above expectations with specially designed alternate volume, number of compartments, discharge systems, heavier condition equipment options.



## OUTSTANDING FEATURES



### Two sides and automatic opening handrail

Provides ease of use, safety and automatically locks the brake system



### Built-in type manhole covers

Protect armatures against possible rollover and impact



### Bottom discharges opened by deep drawing method

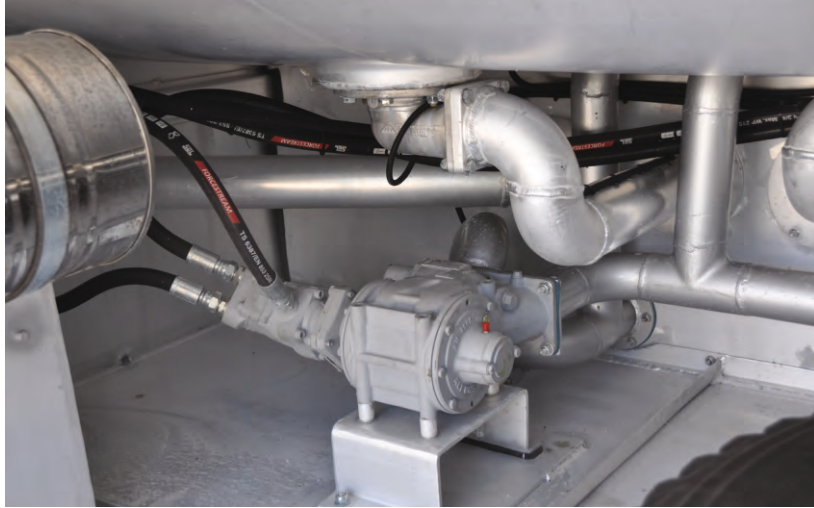
Provides full discharge of the product at the bottom of the tank



### Armature discharge box's cover (Bus type)

Provides mobility and ergonomic handling even in the narrow area





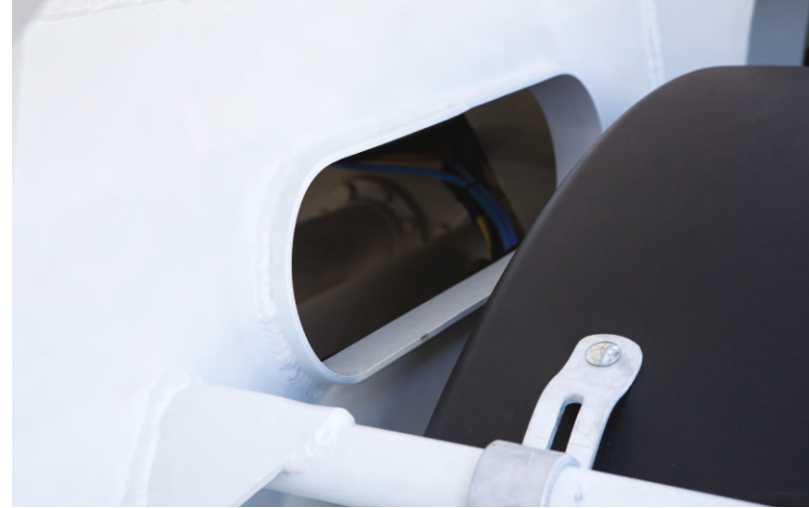
#### **Optional pumping discharge system**

Ergonomic handling with optimized hydromotor, piping and technical equipment provides fast and high flow rate discharge



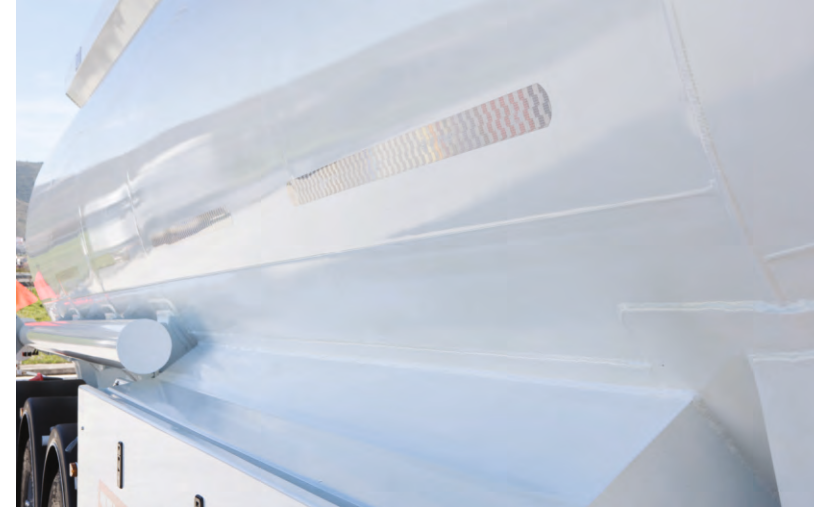
#### **ADR certificated type approved body by TSE / Turkey**

Provides full and secure supervision by national and international up-to-date legislative compliance and expert team



#### **OMEGA mounting slots and bolted connection system on the chassis**

Perfect fit between body and chassis under all kinds of road conditions, increase strength, reduce tension by distributing coming force to the body



#### **Jointless and one-piece plates in the body structure**

The least number of (T) joints provide high strength and long life



#### **The longest welding seam technology in weld joints**

Safe, smooth surface and unique body structure



#### **Use of robotic welding technology in OMEGA® monoblock connection saddles**

Increases body strength at chassis joints, reduces tension effect, provides unity of body



#### **Seamless high performance robotic welding technology**

Minimizes welding faults on the body due to tension and human factors and secures against impact



#### **Homogeneous paint application with advanced technical equipment**

Provides surface gloss in varnish quality





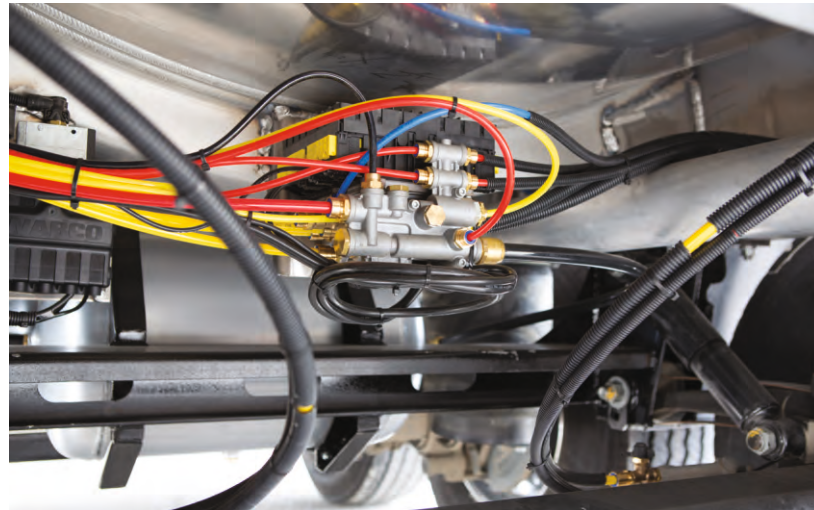
#### Sloping chassis design

Provides complete discharge without any liquid remaining in the tank body



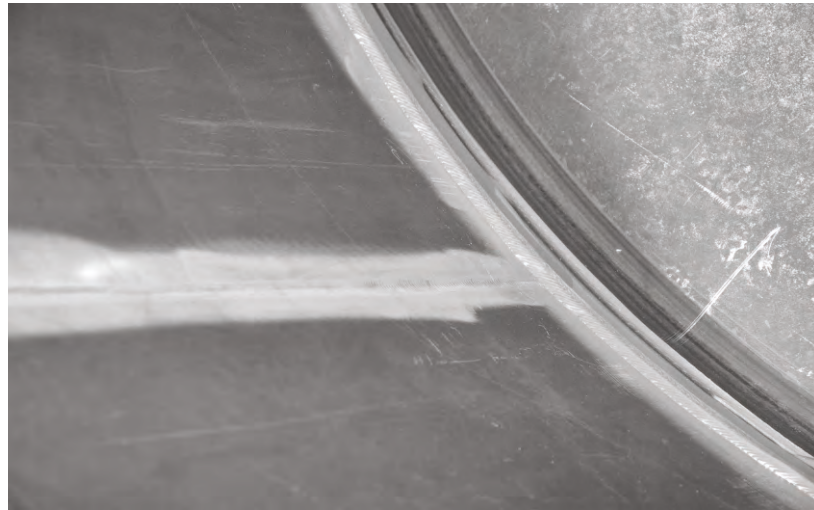
#### Germany KBA approved 2007/46/EC vehicle type approval

Covers national and International up-to-date regulatory compliance and 98/91/EC chassis ADR type approval regulation



#### Coloured, POLYAMID air hoses

Prevents complexity on installation cables, provides serviceability







Special Style

Its unique body design, its unique stance and visual aesthetic make it attractive to its peers.



TECHNICAL SPECIFICATIONS

1. Dimensions		* The product type and optional equipment can vary depending on your choice.	
Width	: max 2.550 mm		
Height	: max 3.800 mm *		
Axle Distance	: 1.310 mm	4. Chassis Equipment	
5 <sup>th</sup> Wheel Height	: 1.250 mm	King-Pin	: Conforms to ECE R 55 regulation, type approved
Dead Weight	: 5.300 ~ 6.100 kg *	2 "or 3.5" demountable king pin	
		Landing Legs	: Each is double speed, 25 ton dynamic, 50 ton static load capacity trailer landing legs
2. Capacity			
Geometrical Volume	: 36.000 ~ 43.000 l.*	Axles	: Axle set with 9 tonnes each, air suspension, disc brakes
Number Of Compartment	: 1 ~ 7*		
		Rims	: 11,75 x 22,5 /0 ~ 120 ofset
3. Tank		Tires	: 385/65 R 22,5
Tank Code	: LGBF	Brake System	: Conforms to ECE R 13 regulation 2S2M
Tank Class	: Class 3	EBS / RSP brake system	
Construction Material Serial	: Aluminium Alloy	Electric System	: Conforms to ECE R 105 regulation ADR approved
Transported Materials	: Gasoline, Diesel, Jet A-1	electric system	
Operating Temperature	: -20 °C + 50 °C	Bumper	: Conforms to ECE R 58 regulation rear bumper
Certification	: ADR - Turkey TSE / Germany KBA (Tuv)		



# TECHNICAL SPECIFICATIONS

## 5. Tank Body

- » Gooseneck cross section design conforms to EN 13094 standard.
- » Dished heads at the front and rear, in accordance with EN 13094 design standard internal baffles fit the selected number of compartments.
- » ISO 3834 Welded manufacturing quality qualification approved.
- » Unique body structure in the tanker manufacturing sector with a smooth surface, with a minimum number of (T) joints, produced by the longest welding seam technology in the gooseneck body structure, seamless, integral plates and their welded joints
- » Using seamless high-performance robotic welding technology, welding faults on the body due to tension and human factors are minimized and secured against impact
- » Tanks and connections are tested with the method of analysis of the end elements under maximum allowable load to increase the strength of the body and reduce the tension effect at the frame junctions. The robotic welding technology is applied to the OMEGA monoblock connection saddles
- » The slope in the chassis design allows complete discharge of each compartment of the tank, with no liquid remaining.
- » Air gap safety against expansion and overflow conforms to EN 15120 standard.

## 6. Loading/Discharge Line

### Loading Line

- » Depending on the driving direction, it is filled through the right-handed couplings from the bottom or the filler opening on the manhole covers from the top.

### Discharge Line

- » Meets EN 13094, on the right side according to the driving direction, gravity discharge through the discharge piping line extending from the bottom valves up to the couplings, at such a slope in order not to remain any liquid in the line after discharge
- » ISO 3834 Welded production quality qualification approved discharge pipes welded to the patent padded.

## 7. Chassis

- » Special designed suitable to body design, horizontally and vertically angled, rollover safety monoblock chassis.
- » OMEGA® monoblock connection saddles provide a rigid structure with excellent fit to the chassis mounting slots and increase strength.
- » Tension reduction gaps reduce the tension by distributing the force coming from the road conditions to the running group.
- » Chassis construction parts are manufactured with synergy welding machines by certified welders under the approval of ISO 3834 Welding quality qualification with perfect harmony

## 8. Paint

- » At least 2 coats of epoxy primer.
- » "OVEN-DRYING" application on topcoat with 2 coats of acrylic paint.
- » Improved technical equipment ensures homogeneous distribution on each side of the body and surface gloss of varnish paint gloss.



## Safe Lightness

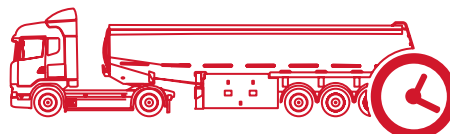
We do not underestimate the weight!

It is carried out the weight optimization under difficult conditions, with dynamic loads at high pressure, without compromising on the philosophy of safe lightness and ergonomics of use.





# GALLERY



## Performance Needs Source

Durable body structure, superior production technology and premium equipment, turn into the long lifetime to income.





ATAOSB Mah. ASTİM 3. Cad. No: 7, 09010 Efeler, Aydın / TÜRKİYE  
T : +90 850 850 1 658 • F : +90 256 231 0 516 • info@okt-trailer.com • www.okt-trailer.com

f /okt.trailer @ /okt.trailer in /company/okt-trailer You /okttrailer

