

UNIVERSAL REAR TIPPING SEMI TRAILER

Multitasking



 **curious for better.**



OKT Trailer

curious for better.



What curiosity means to us, A better future.

The unique reason that the human “bring into being” is curiosity. Curiosity is the first “set a foot on the moon”. Because curiosity; to realize a better and more beautiful future, ask questions, try to understand, produce innovative solutions, explore and never give up. It always takes us a step further.

Our job is always to move your business “one step forward”. That’s why we’re curious. We recognize the needs of the trailer and superstructure equipment sector “before needs appearance” and produce innovative, user friendly and efficiency based products. We dominate the technologies that can go beyond your expectations. Due to our curiosity, we have changed the habits of the sector with every new project we made. We have broken grounds; but we have never been curious about being ahead only with the numbers.

The quality documents we have obtained being a catalyser that enable us to produce new technologies, make progress and be more curious. We curious not just about our sector, we curious about the whole world. For the nonce we are in 3 continents. We are constantly building strong values and collaborations for all of our stakeholders by producing special solutions for the needs of new geographies day by day.

Curiosity means to us not only innovation, engineering and technology. It means to us more beautiful and profitable day for the future.





■ **UNIVERSAL REAR TIPPING**
SEMI TRAILER

Multitasking

For the transport of bulk cargoes, grain transportation, construction, mining and general transportation sectors according to product requirements, 2006/42 / EC Machinery Safety Directive, conforming to the CE mark, with our own know-how license and production technology, carbon, flow and abrasion resistant steel materials, according to the design calculations, thickness, box section, in a large volume range, geographical region climate and road conditions, which are developed considering the needs of filling and discharging operation and storage requirements, Multi Damper Semi Trailer which gives great convenience and practicality during loading and unloading; durable, long life, safe, high strength, unique body structure which is obtained by combining uninterrupted and excellent welding performance, **“Multitasking”** for users in the industry respond to changing conditions and challenged the most tough conditions while fulfilling multiple missions.



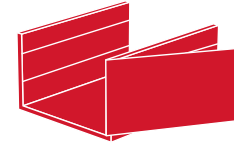
26 ~ 40 m³
Volume Range



27 ~ 50 Tonne
Payload



2 - 4 mm
Material Thickness



Kendinden Açılır
Yana Açılır
Arka Kapak



Multiple Solutions

It offers multiple solutions to challenging tasks under heavy conditions with its specially designed structure, which is designed according to the changing conditions of the geographical region to be served.





Modular Volume

Offers modular solutions to truck chassis in different configurations with its wide volume alternative designs.



OUTSTANDING FEATURES



Homogeneous paint application with improved technical equipment
Surface gloss is provided in varnished paint quality



Hydraulic System
Provides the discharge angle, emptying quickly and easily



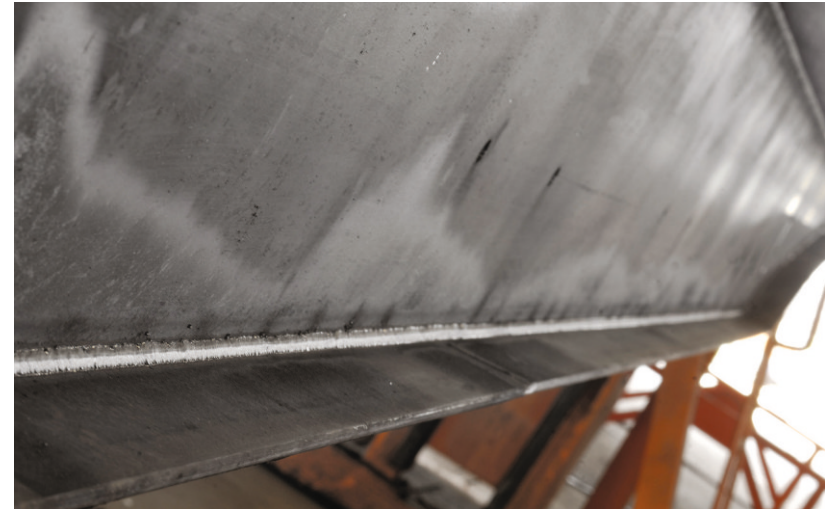
Holistic floor plate
High strength, long life



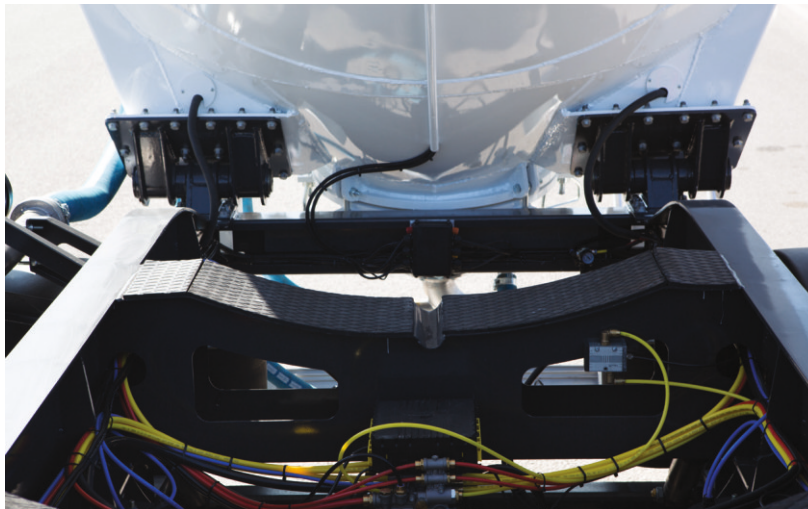
Increased number of side cover twists
High strength



Self and side opening rear cover
Facilitates material flow during unloading



Reinforced chassis
Higher performance

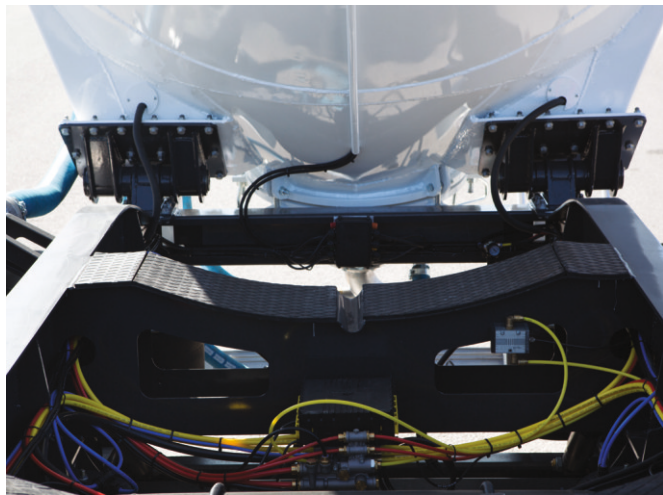


Coloured, POLYAMID air hoses
Prevents complexity on installation cables, provides serviceability



Germany KBA approved 2007/46 / EC vehicle type approval
National and International current legislation compliance









Difference Is Its Style

It creates a difference in style according to its own position and visual aesthetic.



TECHNICAL SPECIFICATIONS

1. Dimensions		Removable from 2" bottoms	
Width	: max. 2.550 mm.	Landing Legs	: Each is double speed, 25 ton dynamic,
Height	: max. 3.150 mm.		50 ton static load capacity trailer landing legs
Axle Distance	: 1.300 ~ 1.400 mm *	Axles	: Axle set with 9 ~ 12 tonnes each, mechanical
King-Pin Height	: 1.250 ~ 1.350 mm *		or air suspension, drum or disc brake
Dead Weight	: 8.000 kg, ± %5		
		Rims	: 11,75 x 22,5
2. Capacity		Tires	: 385/65 R 22,5
Loading Volume	: 26 - 33 - 40 m ³	Brake System	: EBS/ABS brake system conforming to ECE R 13
Additions	: 1 / 2 / 3 / 4 sequential		regulation with RSP
		Electric System	: Electrical set suitable for ECE R 105 regulation
3. Tipper		Bumper	: Suitable for ECE R 58 regulation
Products Carried	: Aggregate and debris type, all solid-phase bulk cargoes and bagged/palletized cargoes		
Certification	: 2006/42/EC Machinery Safety CE Certificate in accordance with the regulation		
4. Chassis Equipment			
King-Pin	: Compliant with ECE R 55 regulation, type approved,		

TECHNICAL SPECIFICATIONS

5. Tipper Body

- » High-performance, square-section design suitable for loading and unloading conditions.
- » High strength, imported, special alloy aluminum material.
- » ISO 3834 Welded manufacturing quality qualification approved.
- » "NPI" cross-members placed transversely on the sub-chassis arms of "NPU" material, at equal intervals and at a frequency that can carry the load coming from the body.
- » The floor plate made of the widest solid plate transversely and longitudinally is joined to the cross members transversely to the subframe by method welding, evenly and regularly, with excellent welding performance. A long-lasting, safe, high-strength base is obtained by providing integrity with the skirt sheets of which strength has been increased by being bent in a "U" shape.
- » A strong front wall that provides integrity with the base and fixed front supports, has the widest whole plate, has twists with increased strength, distributes the lifting force of the hydraulic cylinder from the bearing point to the body with support profiles.
- » The right and left back cover, which is mounted on the fixing slots and open and close with the hinge connection, prevent outward openings that may occur due to the force coming from the load.
- » A pouring chute mounted on the rear cover guides the load during discharge and ensures its homogeneous distribution.
- » Unique body structure that provides a versatile carrying alternative.
- » Holder tilting shaft mounted on the chassis, which provides the body to be combined with the chassis.

6. Hydraulic System

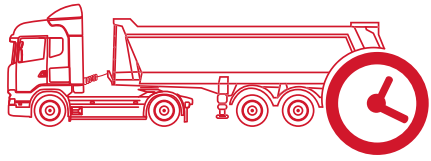
- » 5-stage hydraulic cylinder providing maximum discharge angle.
- » Pressure resistant, filtered, vacuum safe, oil tank with suitable capacity for hydraulic system.
- » Hydraulic pump coupled to PTO providing high pressure and flow suitable for the system.
- » Direction control valve that directs the pressure line in the system.
- » Hydraulic hoses and fittings materials resistant to high pressure and flow.

7. Chasis

- » Suitable for body design, welded to steel flat, special design with overturning safety, steel monobloc chassis
- » Connection brackets on the chassis side arm reduce the stress by distributing the force coming from the road conditions to the walking group.
- » Chassis construction parts are manufactured with synergy welding machines by certified welders under the approval of ISO 3834 Welded manufacturing quality qualification with perfect conformity.

8. Paint

- » At least 2 coats of epoxy primer.
- » OVEN-DRYING" application on topcoat with 2 coats of acrylic paint.
- » Improved technical equipment ensures homogeneous distribution on each side of the body and surface gloss of varnish paint gloss.



Performance Needs Source

Durable body structure, superior production technology and premium equipment, turn into the long lifetime to income.



GALLERY







What curiosity means to us, A better future.



ME.1118.1502.132.18.00

OKT TRAILER reserves the right to make changes in the products. Technical information is approximate and is intended for standard product application. The measurements may vary depending on the truck brand and model. The subject information is not quoted, if you contact us, you can get more detailed information about the product.



ATAOSB Mah. ASTİM 3. Cad. No: 7, 09010 Efeler, Aydın / TÜRKİYE
T : +90 850 850 1 658 • F : +90 256 231 0 516 • info@okt-trailer.com • www.okt-trailer.com

 /okt.trailer  /okt.trailer  /company/okt-trailer  /okttrailer

