

V TYPE NONTIPPING SILO SEMI TRAILER

Traditional Angle



 **curious** for better.

 **OKT Trailer**

A man wearing safety glasses and a headset is leaning over a table, looking intently at a white toy semi-truck with a large cylindrical tank. The background shows a city skyline under a cloudy sky.

curious for better.

What curiosity means to us, A better future.

The unique reason that the human "bring into being" is curiosity. Curiosity is the first "set a foot on the moon". Because curiosity; to realize a better and more beautiful future, ask questions, try to understand, produce innovative solutions, explore and never give up. It always takes us a step further.

Our job is always to move your business "one step forward". That's why we're curious. We recognize the needs of the trailer and superstructure equipment sector "before needs appearance" and produce innovative, user friendly and efficiency based products. We dominate the technologies that can go beyond your expectations. Due to our curiosity, we have changed the habits of the sector with every new project we made. We have broken grounds; but we have never been curious about being ahead only with the numbers.

The quality documents we have obtained being a catalyser that enable us to produce new technologies, make progress and be more curious. We curious not just about our sector, we curious about the whole world. For the nonce we are in 3 continents. We are constantly building strong values and collaborations for all of our stakeholders by producing special solutions for the needs of new geographies day by day.

Curiosity means to us not only innovation, engineering and technology. It means to us more beautiful and profitable day for the future.



■ V TYPE NONTIPPING SILO SEMI TRAILER

Traditional Angle

According to the European Pressure Vessels Regulation and the requirement to have CE conformity approval, with our own know-how license and production technology, we are able to produce carbon steel materials with thicknesses suitable for design calculations, V-type cut, geometric structure provides quick and easy discharge, single output, side and rear discharge alternatives, V Type Nontipping Silo Semi Trailer; while being produced by continuous high-performance robotics welding technology, safe structure and traditional habits for those who do not want to give up their habits, with the **“Traditional Angle”** its reputation exceeds the boundaries.



30 ~ 37 m
Volume Range



Single
Discharge Funnel



-40 ~ +80 °C
Design Temperature



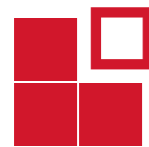
0,5 ~ 3 Bar
Design Pressure



Solid Background

The unchanging line from the past to the present day maintains its value for its users with strong stand, trustworthy certification processes.





Modular Options

Specially designed alternative volume, discharge systems and equipment options; solves your business.

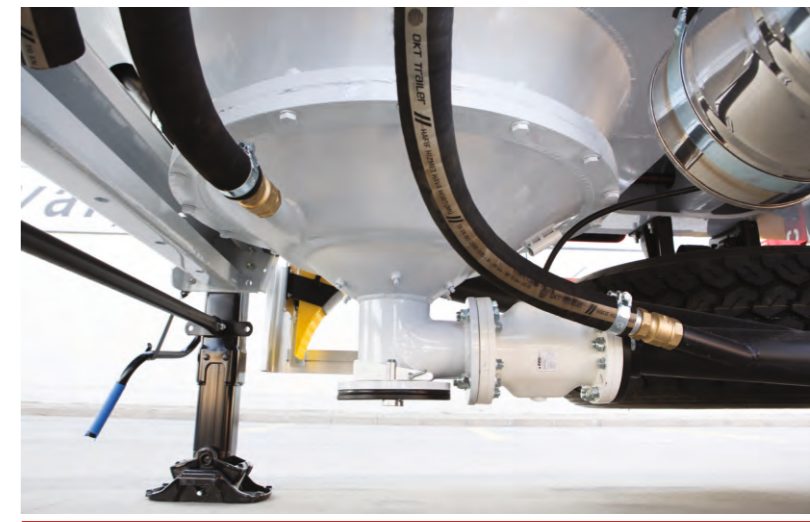


OUTSTANDING FEATURES



Automatic opening guardrail

It provides ease of use, safety and automatically locks the brake system



Interceptable downstream exit funnels

Camlock provides quick and easy intervention against clogging with the connection and provides easy cleaning for the body



Line outlets on the lower exit funnel

Pneumatic controlled, ergonomic, interceptible



Portable compressor mounting platform

Vibration damping, Light, Strength



Safety valve and manometers
Provides safe pressure control



Grouped, defined and systematic drain line installation
Ergonomic, easy accessible, controlled and rapid intervention



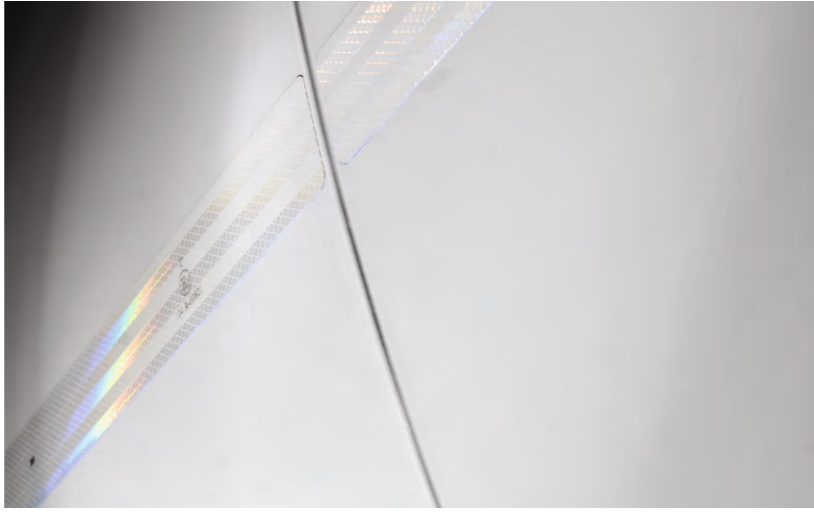
Homogeneous paint application with advanced technical equipment
Provides surface gloss in varnish quality



Integral construction on body and chassis
Perfect fit between body and chassis under all kinds of road conditions, increase strength, reduce tension by distributing force to the body



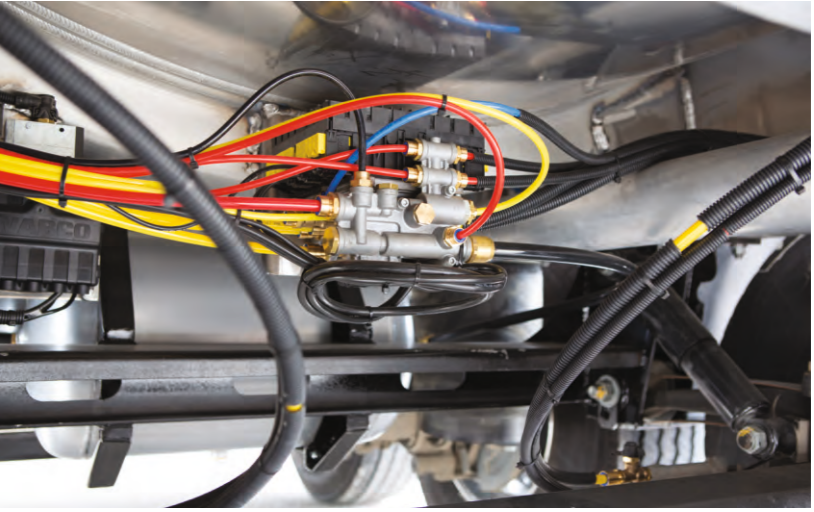
Body production in accordance with 97/23 / EC pressure vessels directive
CE and certified, safe, national international current legislation compliance



Seamless high performance robotic welding technology
Minimizes welding faults on the body due to tension and human factors are secures against impact



Germany KBA approved 2007/46 / EC vehicle type approval
National and International current legislation compliance



Coloured, POLYAMID air hoses
Prevents complexity on installation cables, provides serviceability





Classic Style

It defies the years with its unique stance, visual aesthetics and unconventional classical style.

TECHNICAL SPECIFICATIONS

1. Dimensions		Test Pressure	: 3 bar
Width	: max 2.550 mm	Certification	: ISPE SL CE (2014/68/EU Pressure Vessels Regulations)
Height	: max 3.850 mm *	* The product type and optional equipment can vary depending on your choice.	
Axle Distance	: 1.300 ~ 1.400 mm *		
5 th Wheel Height	: 1.250 ~ 1.350 mm *	4. Chassis Equipment	
Dead Weight	: 6.700 ~ 8.000 kg *	King-Pin	: Conforms to ECE R 55 regulation, type approved 2 "or 3.5" demountable king pin
2. Capacity		Landing Legs	: Each is double speed, 25 ton dynamic, 50 ton static load capacity trailer landing legs
Geometrical Volume	: 30 – 34 – 37 m ³ *	Axles	: Axle set with 9 ~12 tonnes each, mechanical or air suspension, drum or disc brake
Discharge Funnel	: 1	Rims	: 11,75 – 9,00 x 22,5
3. Bulk Carrier		Tires	: 385/65 R 22,5 (single) or 315/80 R 22,5 (double)
Category	: 4	Brake System	: EBS / ABS braking system suitable for ECE R 13 regulation
Construction Material Serial	: Carbon Steel	Electric System	: ADR electrical set suitable for ECE R 105 regulation
Transported Material	: Cement and similar Powder and Granular Materials*	Bumper	: Suitable for ECE R 58 regulation
Working Temperature	: -40 °C +80 °C		
Working Pressure	: 2 bar		

TECHNICAL SPECIFICATIONS

5. Bulk Carrier Body

• V-type multi-output design in accordance with AD 2000 design standard. • High strength steel material. • ISO 3834 Welded manufacturing quality qualification approved. • Utilizing seamless high-performance robotic welding technology, welding faults due to tension and human factors on the body are minimized and secured against impact. • Single discharge outlet body design with DN 800 discharge funnel with conical design which prevents the material to remain inside, provides fast evacuation by collecting the material in the middle with efficient air use that create the vibration effect. • DN 400 discharge outlet flange with mounting bolt and preventing friction in the lower metal body, providing vibration inner collapsible lined with fiber woven fabric felts DN 200 referred funnel. • The DN 200 delivery funnel at the bottom of the hopper T outlet facilitates quick response to the drainage obstructions in the housing and provides a practical solution for the cleaning of the inside of the housing, the side line outlet with a self-locking flange, removable, pneumatically controlled drain valve control. • At chassis junctions, the holistic construction, designed to increase body strength, reduce stress effect, is achieved by synergy welding machines by certified specialist welders with perfect compatibility.

6. Loading/Discharge Line

Loading Line

• Top filling with manhole covers.

Discharge Line

• Of guide funnel, fast, reduces wear, without the risk of clogging may be easily interfered, flanged, bolted, direct. • DN 200 according to the driving direction with the lower outlet piping rear or left from the discharge line and the outlet end of the double pernl the camlock associated cover. • Welded joints are reinforced by external reinforcement against wear.

Air Line Installation

• Ergonomic, easily accessible, controlled and fast intervention, grouped, defined and systematic. • Controlled in-tank air inlet valve, which allows passage of pressurized air from the compressor into the body. • Emergency air discharge valve, which discharges pressurized air in the event of possible danger during discharge. • The collector discharge valve, which discharges the air in the collector pipe. • The controlled, air-vibration valve, which accelerates the flow of material in the body to the discharge funnels. • The material accelerating jet nozzles, which accelerate the material flow in the material delivery line.

Compressor and Connection Platform

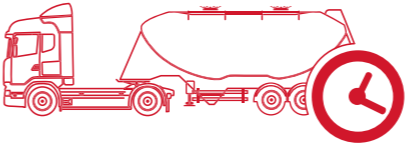
• Optionally, the preferred compressor. • The compressor operation of vibration damping occurs during special wedge is integral with the tray plate, compressor safe connection platform.

7. Chassis

• Suitable for body design, welded to steel flat, special design with overturning safety, steel monobloc chassis. • Chassis construction parts are manufactured with synergy welding machines by certified welders under the approval of ISO 3834 Welded manufacturing quality qualification with perfect conformity.

8. Paint

• At least 2 coats of epoxy primer. • "OVEN-DRYING" application on topcoat with 2 coats of acrylic paint. • Improved technical equipment ensures homogeneous distribution on each side of the body and surface gloss of varnish paint gloss.



Performance Needs Source

Durable body structure, superior production technology and premium equipment, turn into the long lifetime to income.



GALLERY





ATAOSB Mah. ASTİM 3. Cad. No: 7, 09010 Efeler, Aydın / TÜRKİYE
T : +90 850 850 1 658 • F : +90 256 231 0 516 • info@okt-trailer.com • www.okt-trailer.com

f /okt.trailer @ /okt.trailer in /company/okt-trailer You /okttrailer

