

# W TYPE NONTIPPING SILO SEMI TRAILER

## *Innovative Angle*



 **curious for better.**



**OKT Trailer**





**curious for better.**

## ***What curiosity means to us, A better future.***

The unique reason that the human “bring into being” is curiosity. Curiosity is the first “set a foot on the moon”. Because curiosity; to realize a better and more beautiful future, ask questions, try to understand, produce innovative solutions, explore and never give up. It always takes us a step further.

Our job is always to move your business “one step forward”. That’s why we’re curious. We recognize the needs of the trailer and superstructure equipment sector “before needs appearance” and produce innovative, user friendly and efficiency based products. We dominate the technologies that can go beyond your expectations. Due to our curiosity, we have changed the habits of the sector with every new project we made. We have broken grounds; but we have never been curious about being ahead only with the numbers.

The quality documents we have obtained being a catalyser that enable us to produce new technologies, make progress and be more curious. We curious not just about our sector, we curious about the whole world. For the nonce we are in 3 continents. We are constantly building strong values and collaborations for all of our stakeholders by producing special solutions for the needs of new geographies day by day.

Curiosity means to us not only innovation, engineering and technology. It means to us more beautiful and profitable day for the future.





# ■ W TYPE NONTIPPING SILO SEMI TRAILER

## ***Innovative Angle***

*W Type Nontipping Silo Semi Trailer that is designed according to the European Pressure Vessels Regulation and customer demands with our own know-how license and production technology, fully conforming to ADR regulations, CE conformity approval for dangerous powders and granules transportation, can be made of carbon, stainless steel and aluminum alloy materials, with wide volume range, geometric structure for quick and easy discharge, multi-outlets, side and rear discharge alternatives; It is intelligent investment with the full and quick discharge capability of materials carried in different contents while being produced with continuous high performance robotic welding technology and also gains **"Innovative Angle"** to the sectors that serve beyond the boundaries of its reputation with its unique design, safe and long life structure that raises the standards.*



31 ~ 56 m  
Volume Range



1 ~ 5  
Discharge Funnel



-40 ~ +80 °C  
Design Temperature



0,5 ~ 3 Bar  
Design Pressure



### Solid Future

Shape the future with innovative structure that changes habits and raises standards in the sector, trustworthy certification processes and gained profit.





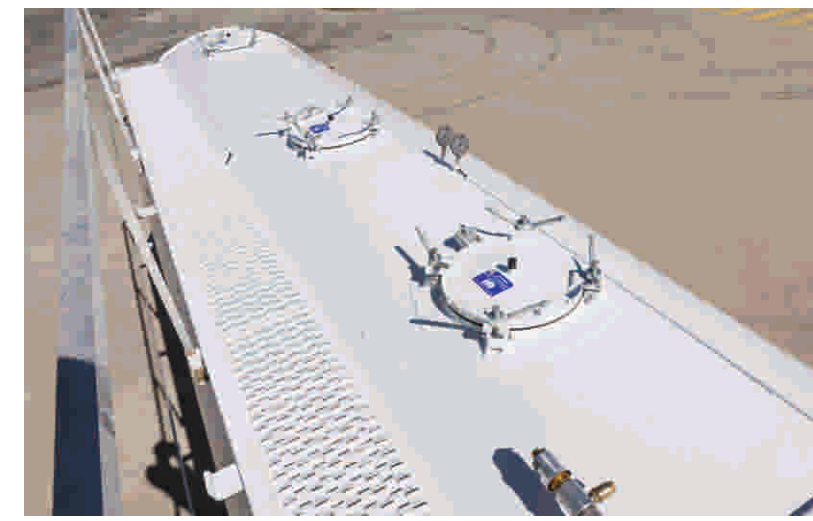


## Modular Options

Options of special designed alternative volume, discharge systems and equipment; sort out your job.



## OUTSTANDING FEATURES



### Automatic opening handrail

Provides ease of use, safety and automatically locks the brake system



### Special body design at right angles

Prevents the material from staying inside and provides fast discharging, efficient use of air



### Multiple output body design

Allows different types of material to move without mixing



### Grouped, defined and systematic discharge line installation

Provides ergonomic, easily accessible, controlled and fast response





#### **Safety valve and manometers**

Provide safe pressure control



#### **Discharge funnels**

Provides quick and easy intervention against clogging with camlock connection, provides easy cleaning of the body



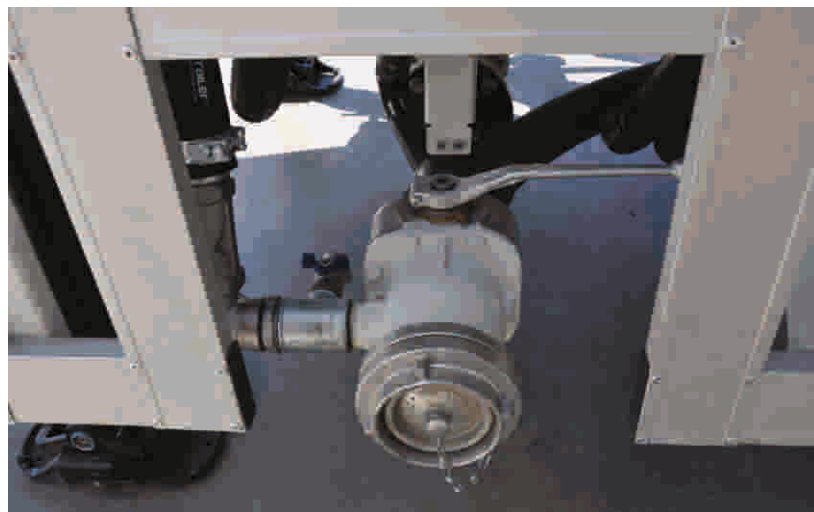
#### **Integral construction on body and chassis**

Perfect fit between body and chassis on all kinds of road conditions, increase strength, reduce tension by distributing force that comes to the body from the road conditions



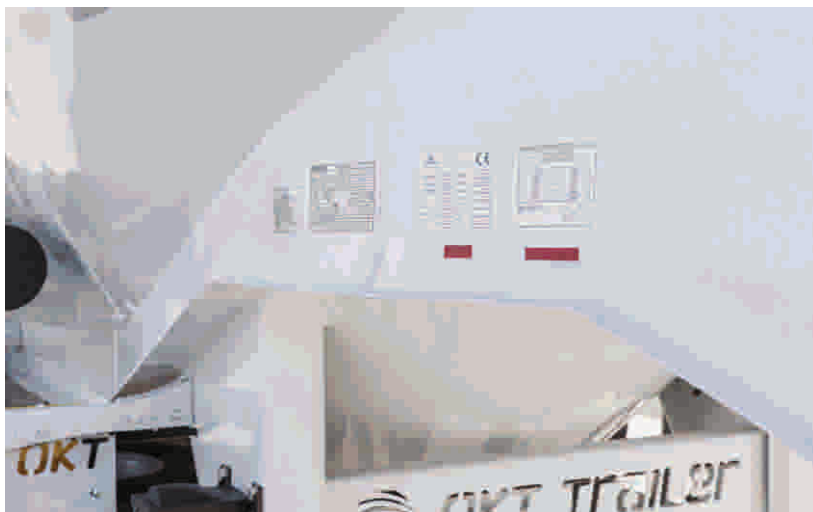
#### **Seamless one-piece plates in the body structure**

The least number of (T) joints provide high strength and longlife



#### **Outputs on the discharge funnel**

Pneumatic controlled, ergonomic, interceptible



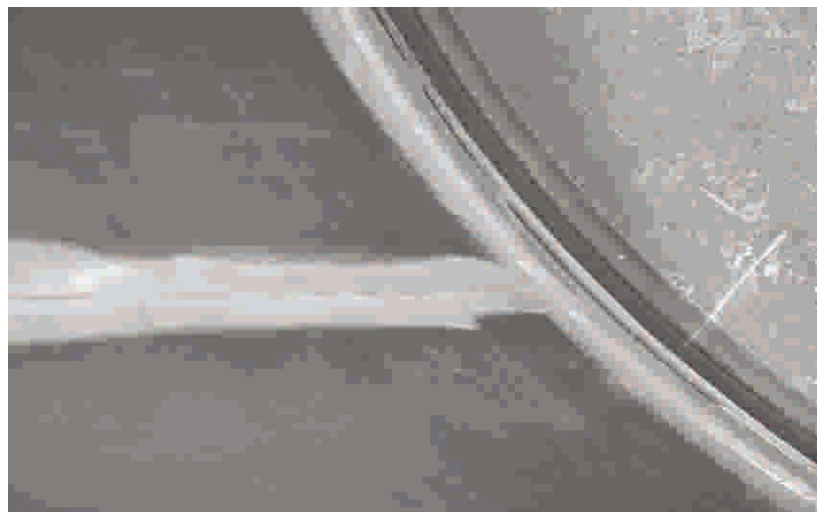
#### **Body production in accordance with 97/23/EC Pressure Vessels Directive**

CE certificated, safe, national international current legislation compliance



#### **The longest welding seam technology in weld joints**

Safe, smooth surface and unique body structure



#### **Seamless high performance robotic welding technology**

Minimizes welding faults on the body due to tension and human factors and secures against impact



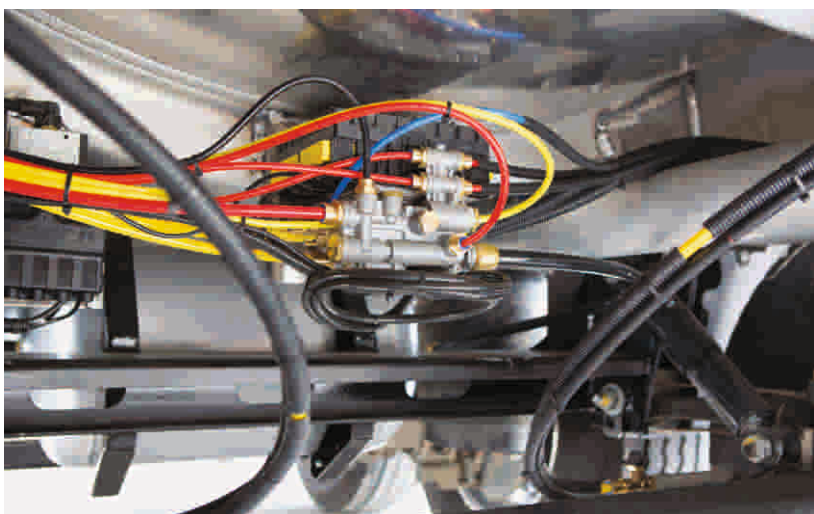
**Homogeneous paint application with advanced technical equipment**  
Provides surface gloss in varnish quality



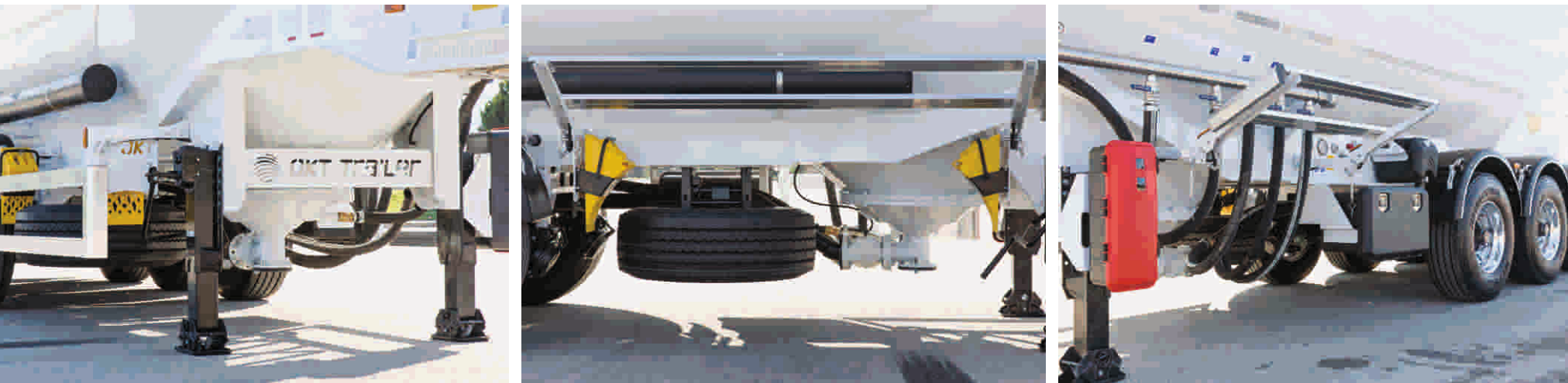
**Portable compressor mounting platform**  
Vibration absorber, Light and Strong



**Germany KBA approved 2007/46/EC Vehicle Type Approval**  
National and International current legislation compliance



**Coloured, POLYAMID air hoses**  
Prevents complexity on installation cables, provides serviceability







Show of Strength

Its style of unique body design, original stand and visual aesthetic against compeers; makes it more attractive.



TECHNICAL SPECIFICATIONS

1. Dimensions		Test Pressure	: 3 bar
Width	: max 2.550 mm	Certification	: ISPESL CE (2014/68/EU Pressure Vessels Regulations)
Height	: max 3.850 mm *	* The product type and optional equipment can vary depending on your choice.	
Axle Distance	: 1.300 ~ 1.400 mm *		
5 <sup>th</sup> Wheel Height	: 1.250 ~ 1.350 mm *		
Dead Weight	: 4.300 ~ 8.350 kg *	4. Chassis Equipment:	
2. Capacity		King-Pin	: Conforms to ECE R 55 regulation, type approved  2" or 3.5" demountable king pin
		Landing Legs	: Each is double speed, 25 ton dynamic, 50 ton static load capacity trailer landing legs
		Axles	: Axle set with 9 ~12 tonnes each, mechanical or air suspension, drum or disc brake
3. Bulk Carrier:		Rims	: 14,00 - 11,75 - 9,00 x 22,5
Category	: 4	Tires	: 425 - 385/65 R 22,5 (Single) or 315/80 R 22,5 (double)
Construction Material Serial	: Aluminum Alloy or Mild Steel or Stainless Steel *	Brake System	: EBS / ABS braking system suitable for ECE R 13 regulation
Transported Materials	: Cement, Calcite, Silica Sand and similar powder and granular materials	Electric System	: ADR electrical set suitable for ECE R 105 regulation
Working Temperature	: -40°C +80°C	Bumper	: Suitable for ECE R 58 regulation
Working Pressure	: 2 bar		



# TECHNICAL SPECIFICATIONS

## 5. Bulk Carrier Body

W-type multi-output design in accordance with AD 2000 design standard. • Unique body structure with safety, smooth surface, with a minimum number of joints (T) points produced by the longest welding seam technology in the welded joints, in the Bulk Carrier production sector, with circular joints in the special trunk construction. • ISO 3834 Welded manufacturing quality qualification approved. • Using seamless high-performance robotic welding technology, welding faults due to tension and human factors on the body are minimized and secured against impact. • Lower body design with right angle. • DN 800 discharge funnel with conical design, which prevents the material from staying inside, provides fast evacuation with efficient air use, provides leakproofness between lower body parts and prevents weld wear at junctions, DN 800 discharge outlet flange with mounting bolt and preventing friction in the lower metal body, providing vibration inner collapsible lined with fiber woven fabric felts DN 200 referred funnel. • The DN 200 discharge funnel at the bottom of the hopper ‘T’ outlet facilitates quick response to the drainage obstructions in the housing and provides a practical solution for the cleaning of the inside of the housing, the side line outlet with a self-locking flange, removable, pneumatically controlled drain valve control. • At chassis junctions, the holistic construction, designed to increase body strength, reduce tension effect, is achieved by synergy welding machines by certified specialist welders in perfect harmony.

## 6. Loading/Discharge Line

### Loading Line

- Top filling through manhole covers.

### Discharge Line

- Of each discharge funnel, fast, reduces wear, without the risk of clogging may be easily interfered, flanged, bolted, direct, DN 200 according to the driving direction with the lower outlet piping rear or left from the discharge line and the outlet end of the double pernel the camlock associated cover welded joints are reinforced by external reinforcement against wear.

### Air Line Installation

- Ergonomic, easily accessible, controlled and fast intervention, grouped, defined and systematic. • Controlled in-tank air inlet valve that allows passage of pressurized air from the compressor into the body. • Emergency air discharge valve that discharges pressurized air in the event of possible danger during discharge. • The collector discharge valve that discharges the air in the collector pipe. • The controlled, air-vibration valve that accelerates the flow of material in the body to the discharge funnels. • The material accelerating jet nozzles that accelerate the material flow in the material delivery line.

### Compressor and Connection Platform

Optionally preferred compressor, The compressor operation of vibration damping occurs during special wedge is integral with the tray plate, compressor safe connection platform.

## 7. Chassis:

- Suitable for body design, specially drawn “T” profile welded, special design with overturning safety, monoblock chassis with the same features as the body material.
- Chassis construction parts are manufactured with synergy welding machines by certified welders under the approval of ISO 3834 Welded manufacturing quality qualification with perfect conformity.

## 8. Paint:

- At least 2 coats of epoxy primer.
- “OVEN-DRYING” application on topcoat with 2 coats of acrylic paint.
- Improved technical equipment ensures homogeneous distribution on each side of the body and surface gloss of varnish paint gloss.



## Safe Lightness

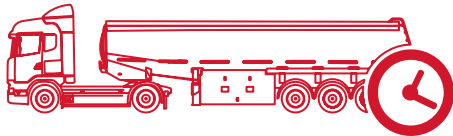
We do not underestimate the weight!

Carry out the dynamic loads at high volume under the heavy duty conditions with safe weight optimization and without compromising of the ergonomic driving.





GALLERY



**Performance Needs Source**  
Durable body structure together with superior production technology and premium equipment turns the long lifetime into profit.





ATAOSB Mah. ASTİM 3. Cad. No: 7, 09010 Efeler, Aydın / TÜRKİYE  
T : +90 850 850 1 658 • F : +90 256 231 0 516 • info@okt-trailer.com • www.okt-trailer.com

 /okt.trailer  /okt.trailer  /company/okt-trailer  /okttrailer

