

WATER TANKER SEMI TRAILER

Shape Of The Water





curious for better.

What curiosity means to us, A better future.

The unique reason that the human "bring into being" is curiosity. Curiosity is the first "set a foot on the moon". Because curiosity; to realize a better and more beautiful future, ask questions, try to understand, produce innovative solutions, explore and never give up. It always takes us a step further.

Our job is always to move your business "one step forward". That's why we're curious. We recognize the needs of the trailer and superstructure equipment sector "before needs appearance" and produce innovative, user friendly and efficiency based products. We dominate the technologies that can go beyond your expectations. Due to our curiosity, we have changed the habits of the sector with every new project we made. We have broken grounds; but we have never been curious about being ahead only with the numbers.

The quality documents we have obtained being a catalyser that enable us to produce new technologies, make progress and be more curious. We curious not just about our sector, we curious about the whole world. For the nonce we are in 3 continents. We are constantly building strong values and collaborations for all of our stakeholders by producing special solutions for the needs of new geographies day by day.

Curiosity means to us not only innovation, engineering and technology. It means to us more beautiful and profitable day for the future.



■ WATER TANKER SEMI TRAILER

Shape Of The Water

While adopting innovative and creative solutions tailored to the specific needs of our customers as the basic principle of flexible production understanding, our own know-how license is based on the geographical region and the technologies, and according to the region's climate road conditions where we will serve- carbon steel for use water, stainless steel materials for drinking water in thicknesses suitable for design calculations, different geometric cross sections, large volumes, Water Tanker Semi Trailer which can be filled from top to bottom and can be transported one or three chambers, powered and discharged to the flow; (T) point and the longest weld seam technology, which is made up from seamless pieces in the main body structure and **"Shape Of The Water"** it carries takes the form of unique body structure, it challenges both roads and years.



26.000 ~ 32.000 Lt.
Volume Range



1 ~3
Number of
Compartments



-20 ~ +50 °C
Design Temperature



0,5 Bar
Design Pressure



Water Is The Future

Designed specifically for specific needs, drinking and industrial purposes, our water tankers offer added value to their users in the future with the advantages and long life.





Modular Options

Specially designed alternative volume, discharge systems and equipment options; solves your business.

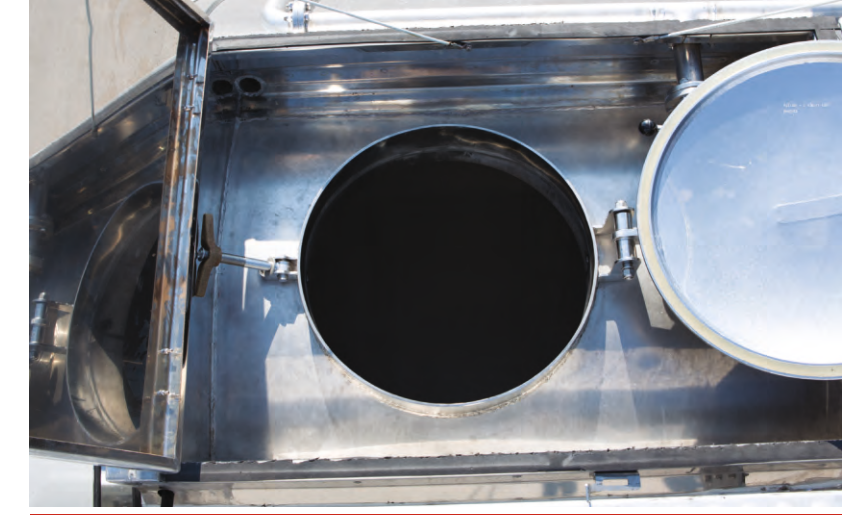


OUTSTANDING FEATURES



Automatic opening guardrail

It provides ease of use, safety and automatically locks the brake system



Spilltrays type top pool

Protect armatures against possible rollover and impact



Jointless and one-piece plates in the body structure

The least number of (T) joints provide high strength and long life



Bottom discharges opened by deep drawing method

Provides full discharge of the product at the bottom of the tank



Use of robotic welding technology in OMEGA® monoblock connection saddles
Increases body strength at chassis joints, reduces tension effect, provides unity of body



The longest welding seam technology in weld joints
Safe, smooth surface and unique body structure



Sloping chassis design
Provides complete discharge without any liquid remaining in the tank body



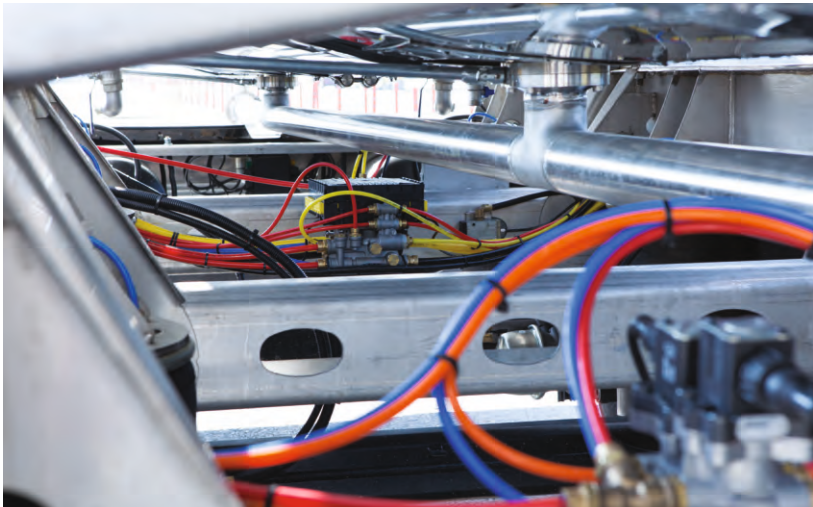
Germany KBA approved 2007/46 / EC vehicle type approval
Covers national and International up-to-date regulatory compliance



Seamless high performance robotic welding technology
Minimizes welding faults on the body due to tension and human factors are secures against impact



Homogeneous paint application with advanced technical equipment
Provides surface gloss in varnish quality



Coloured, POLYAMID air hoses
Prevents complexity on installation cables, provides serviceability







Functionality In The Foreground

Designed specifically for the needs and expectations of users, with the option of heating and discharging system, where the transport temperature is protected, functionality is the foreground.



TECHNICAL SPECIFICATIONS

1. Dimensions		4. Chassis Equipment	
Width	: max 2.550 mm	King-Pin	: Conforms to ECE R 55 regulation, type approved
Height	: max 3.800 mm *		2 "or 3.5" demountable king pin
Axle Distance	: 1.300 ~ 1.400 mm *	Landing Legs	: Each is double speed, 25 ton dynamic, 50 ton static load capacity trailer landing legs
5 th Wheel Height	: 1.250 ~ 1.350 mm *		
Dead Weight	: 7.250 ~ 8.800 kg *	Axles	: Axle set with 9 or 10 tonnes each, air suspension, disc brakes
2. Capacity		Rims	: 14,00 or 11,75 x 22,5
Geometrical Volume	: 26.000 ~ 36.000 l *	Tires	: 425 or 385 /65 R 22,5
Number Of Compartment	: 1 ~ 3 *	Brake System	: Conforms to ECE R 13 regulation 2S2M EBS / RSP brake system
3. Tank		Electric System	: Conforms to ECE R 105 regulation ADR approved electric system
Construction Material Serial	: Mild Steel or Stainless Steel *	Bumper	: Conforms to ECE R 58 regulation rear bumper
Transported Materials	: Potable and non-potable water *		
Operating Temperature	: -20 °C + 50 °C		
	* The product type and optional equipment can vary depending on your choice.		

TECHNICAL SPECIFICATIONS

5. Tank Body

- » Conical-Cylindrical cross section design conforms to EN 13094 standard.
- » Dished heads at the front and rear, in accordance with EN 14025 design standard internal baffles fit the selected number of compartments.
- » ISO 3834 Welded manufacturing quality qualification approved.
- » Unique body structure in the tanker manufacturing sector with a smooth surface, with a minimum number of (T) joints, produced by the longest welding seam technology in the cylindrical and main body structure, seamless, integral plates and their welded joints.
- » Using seamless high-performance robotic welding technology, welding faults on the body due to tension and human factors are minimized and secured against impact.
- » Tanks and connections are tested with the method of analysis of the end elements under maximum allowable load to increase the strength of the body and reduce the tension effect at the frame junctions. The robotic welding technology is applied to the OMEGA monoblock connection saddles.
- » The slope in the chassis design allows complete discharge of each compartment of the tank, with no liquid remaining.
- » The cleaning manhole for cleaning inside tank and its each compartment when necessary.

6. Loading/Discharge Line

Loading Line

- » Depending on the driving direction, it is filled through the right-handed couplings from the bottom or through the manhole covers or closed-circuit filling couplings from the top.

Discharge Line

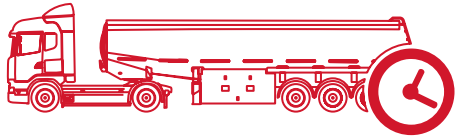
- » Meets EN 13094, on the right side according to the driving direction, gravity discharge through the discharge piping line extending from the bottom valves up to the couplings, at such a slope in order not to remain any liquid in the line after discharge.
- » ISO 3834 Welded production quality qualification approved discharge pipes welded to the exported patent padded.

7. Chassis

- » Special designed suitable to body design, horizontally and vertically angled, rollover safety half or full chassis.
- » OMEGA® monoblock connection saddles provide a rigid structure with excellent fit to the chassis mounting slots and increase strength.
- » Tension reduction gaps reduce the tension by distributing the force coming from the road conditions to the running group.
- » Chassis construction parts are manufactured with synergy welding machines by certified welders under the approval of ISO 3834 Welding quality qualification with perfect harmony.

8 Paint:

- » After the in-tank pickling application, bacterial formation and chemical corrosion are prevented by passivation process.
- » At least 2 coats of epoxy primer.
- » "OVEN-DRYING" application on topcoat with 2 coats of acrylic paint.
- » Improved technical equipment ensures homogeneous distribution on each side of the body and surface gloss of varnish paint gloss.



Performance Needs Source

Durable body structure, superior production technology and premium equipment, turn into the long lifetime to income.



GALLERY





ATAOSB Mah. ASTİM 3. Cad. No: 7, 09010 Efeler, Aydın / TÜRKİYE
T : +90 850 850 1 658 • F : +90 256 231 0 516 • info@okt-trailer.com • www.okt-trailer.com

f /okt.trailer @ /okt.trailer in /company/okt-trailer You /okttrailer

